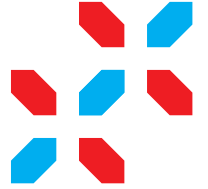


Lao People's Democratic Republic

LUXEMBOURG
AID & DEVELOPMENT



LAOS-LUXEMBOURG

10 • 2022

DEVELOPMENT COOPERATION







Table of contents

04	LAOS OVERVIEW
06	STRATEGIES & PRINCIPLES
07	LUXEMBOURG DEVELOPMENT COOPERATION IN LAOS
08	INDICATIVE COOPERATION PROGRAMME
09	FIGURES
12	BILATERAL COOPERATION
20	MULTILATERAL COOPERATION
22	COOPERATION WITH NGOs
23	HUMANITARIAN ASSISTANCE
27	REGIONAL COOPERATION
31	OTHER CONTRIBUTIONS BY LUXEMBOURG GOVERNMENT
33	CONTACTS

Laos, overview*



140/191

Human Development Index 2021-2022

153/1,000

Mortality rate, adult, female
(per 1,000 female adults)

3.2%

Urban population growth

44/1,000

Infant mortality rate

68

Life expectancy at birth

2.6

Children born/woman

85%

Literacy rate

2.6

CO₂ emissions
(metric tons/capita)

4

2

Median Age

236,800 km²

Area

7,379,358

Population

7,800 USD

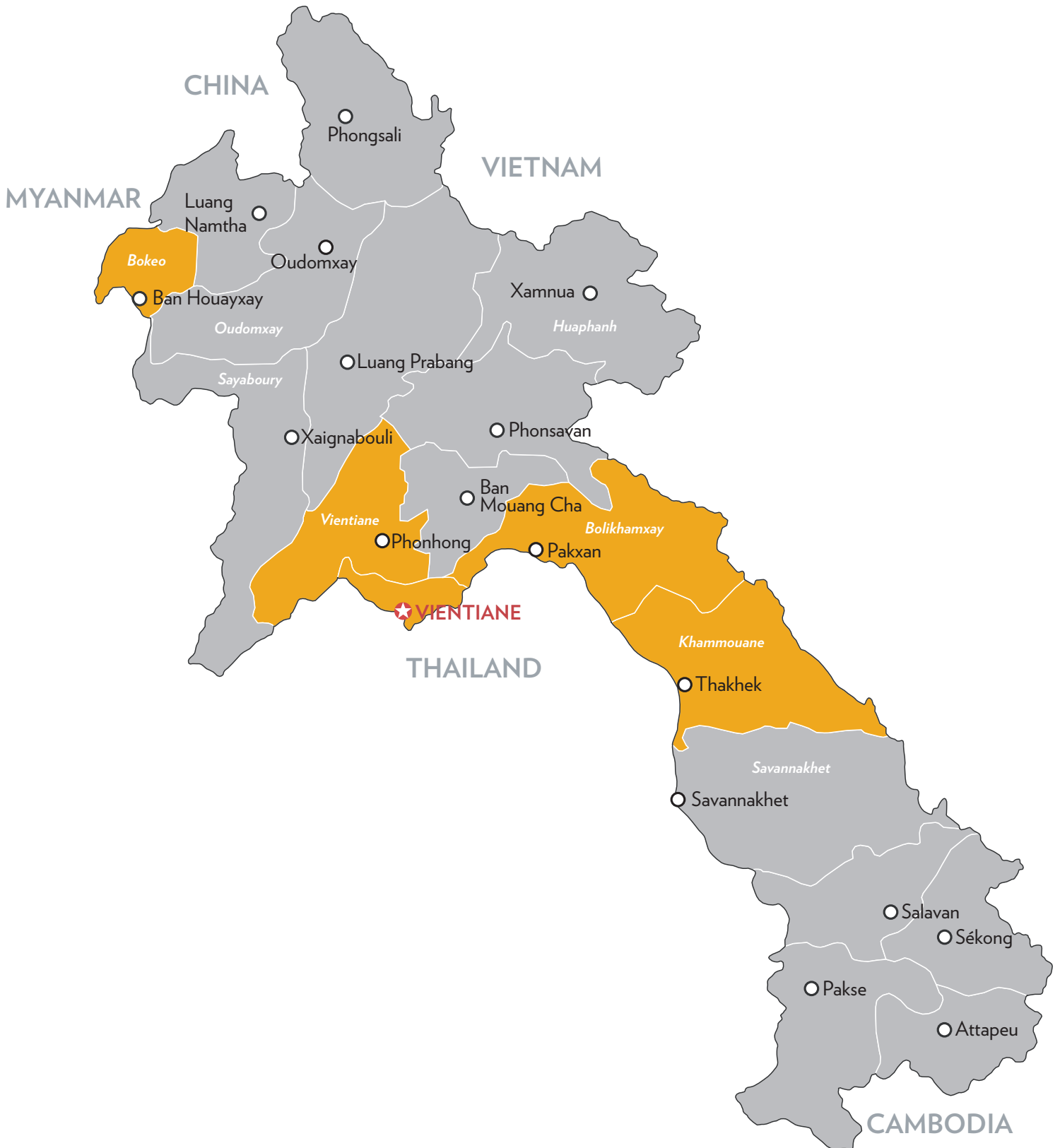
GNI/capita (PPP)

1.4%

Population growth rate

*Source: databank.banquemondiale.org

- Luxembourg Development Cooperation-main areas of operation
- Luxembourg Development Cooperation-secondary areas of operation
- ★ Embassy of the Grand Duchy of Luxembourg and LuxDev Regional Office in Vientiane, Laos



Luxembourg Development Cooperation: Strategies and principles



GOALS

Luxembourg Development Cooperation is strongly committed to eradicating poverty.



ACTIONS

While adopting a human-centered approach, actions are designed and carried out in the spirit of sustainable development, including its social, economic and environmental aspects. They aim at implementing the Sustainable Development Goals (SDG).

PRIORITY AREAS

Main intervention areas:

- improving access to quality basic social services;
- enhancing socio-economic integration of women and youth;
- promoting inclusive and sustainable growth;
- strengthening inclusive governance.

CROSS-CUTTING ISSUES

- human rights;
- gender equality and women's empowerment;
- environment and climate change.

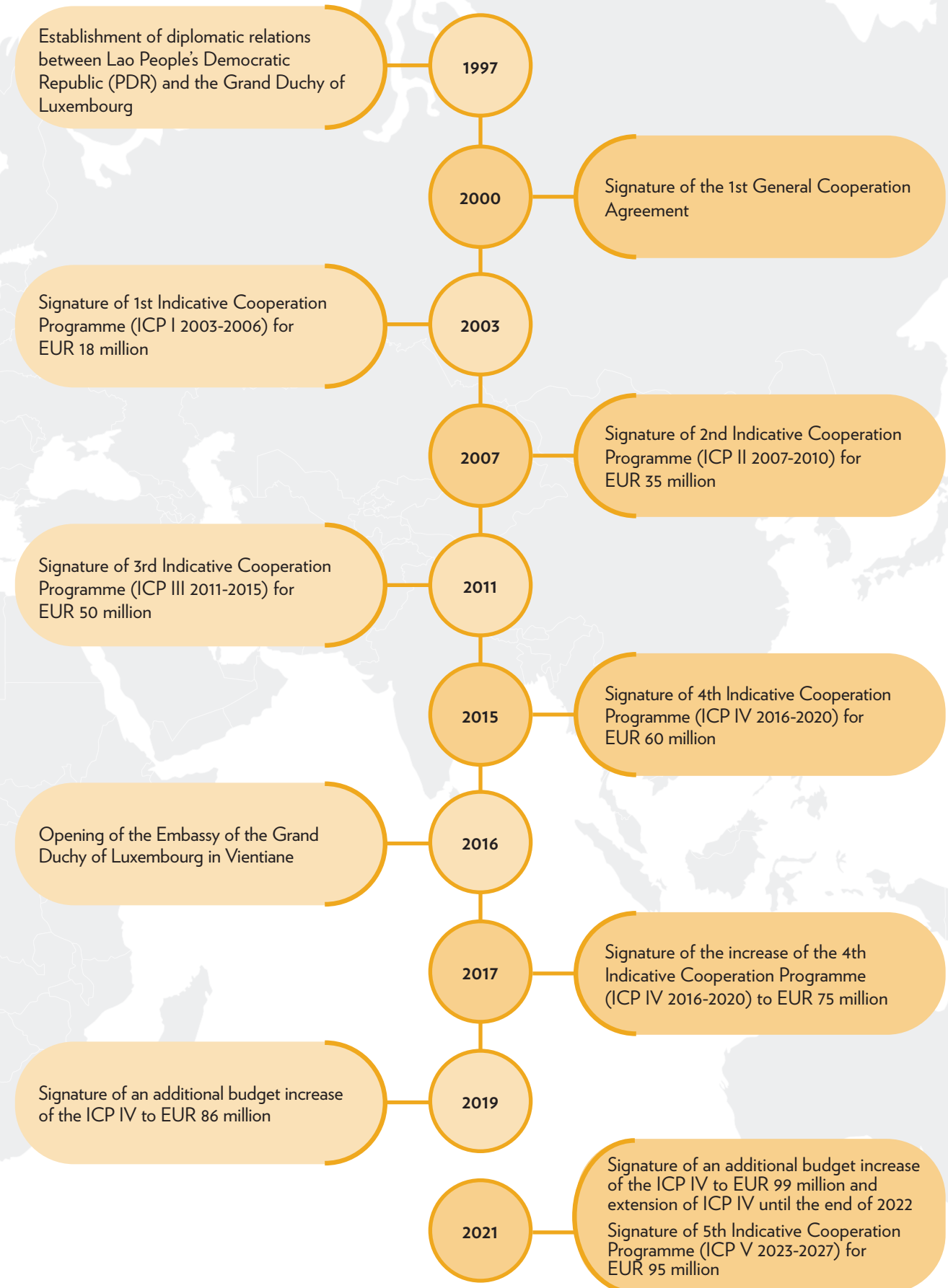
CONCENTRATION OF DEVELOPMENT AID IN VIEW OF MAXIMISING ITS IMPACT

- long-term commitment in a limited number of partner countries;
- sectoral concentration in areas in which Luxembourg holds expertise or a specific comparative advantage;
- partnership approach for the definition of Indicative Cooperation Programs (ICPs) ;
- alignment with the principles of development effectiveness.

OFFICIAL DEVELOPMENT ASSISTANCE (ODA)

- 1% share of gross national income allocated to ODA since 2009 ;
- 100% untied ODA, entirely grants based ;
- partnership approach for ODA implementation, relying on bi- and multilateral instruments and Non-governmental organisations (NGO), as well as programme support ;
- includes the delivery of Humanitarian assistance: emergency aid in response to
- humanitarian/ natural disasters and violent conflicts, post disaster aid, transition aid, prevention and resilience aid.

Luxembourg Development Cooperation in Laos



4th Indicative Cooperation Programme between Laos and Luxembourg (2016–2022)

ICP AGREEMENT

Signed in September 2015 between the governments of Laos and Luxembourg, the fourth Indicative Cooperation Programme (ICP IV) initially covered the time period 2016-2020. In July 2021, ICP IV was extended until the end of 2022 to catch up delays from the global pandemic of COVID-19.

ICP BUDGET

Based on an initial budget allocation in 2016 of EUR 60 million by the Luxembourg government, the ICP IV has benefited from several budget increases over the years, which have raised the overall ICP IV budget to more than EUR 99 million in 2022.

PRIORITY AREAS



Access and provision of basic health services => because a safe, affordable and accessible health care system for all is an essential cornerstone for sustainable socio-economic development.



Education, particularly vocational and technical training in the tourism and hospitality sector and access to labour markets => in order to equip young graduates with quality skills and competencies matching the labour market needs.



Local/ Rural development => to facilitate an enabling environment for improved socio-economic status and access to quality public service provision aligned with local needs and priorities.



Promotion of the Rule of Law => to strengthen capacities for an enabling environment for effective rule of law and access to justice.

GEOGRAPHIC CONCENTRATION AND KEY ACTORS

4



Luxembourg's main geographical areas of operations are the four provinces of Bokeo, Bolikhamxay, Khammouane and Vientiane.

4



Key implementation actors of ICP IV programmes and projects include LuxDev - Luxembourg Development Cooperation Agency, United Nations agencies, Non-governmental and civil-society organisations, as well as actors from the academic and private sectors.

ICP IV MID-TERM REVIEW

- highlighted the strong strategic relevance and alignment of ICP IV with the priorities of Lao PDR's Development Strategy as well as with its sectoral policies;
- emphasized the relevance of the main sectoral/thematic focus areas of the ICP IV;
- noted that synergies between ICP IV programmes could be further enhanced and that additional efforts are needed to ensure a sustainable development impact in the long term.

Figures

1. Bilateral Cooperation

Duration	Code	Title	Execution	Total Budget EUR
2014-2022	LAO/027	Lao-Luxembourg Health Sector Support Programme-Phase II	LuxDev	36,356,147
2016-2022	LAO/029	Skills for Tourism-Human Resources Development in the Tourism and Hospitality Sector	LuxDev	*7,853,000
2016-2022	LAO/030	Local Development Programme for Bokeo, Bolikhamxay, Khammouane and Vientiane Provinces	LuxDev	32,409,343
2017-2022	LAO/031	Support Programme for Legal Teaching and Training and to the Promotion of the Rule of Law Concept in Laos	LuxDev	8,948,217
2020-2023	LAO/032	Support to the Triangular Cooperation in the Finance Sector between Vietnam, Laos and Luxembourg	LuxDev	500,000
2019-2023	LAO/033	Strengthening the Effectiveness of Official Development Assistance Management in Laos	LuxDev	1,300,000
2016-2020	-	Luxembourg-Laos Partnership for Research and Capacity Building in Infectious Disease Surveillance II (PaReCIDS II)	Luxembourg Institute of Health (LIH) and Institut Pasteur of Laos	2,218,616
2021-2026	-	Luxembourg-Laos Partnership for Research and Capacity Building in Infectious Disease Surveillance III (PaReCIDS III)	Luxembourg Institute of Health (LIH) and Institut Pasteur of Laos	3,129,394
2017-2021	-	Interuniversity cooperation between the University of Luxembourg and the National University in Laos – Faculty of Law – Phase I	University of Luxembourg and the National University in Laos	696,400
2021-2024	-	Interuniversity cooperation between the University of Luxembourg and the National University in Laos – Faculty of Law – Phase II	University of Luxembourg and the National University in Laos	1,396,700
2017-2020	-	Capacity building for the Laos Statistical Bureau (LLPS Phase I)	LSB and STATEC	800,000
2021-2026	-	Capacity building for the Laos Statistical Bureau (LLPS Phase II)	LSB and STATEC	2,048,300
2018-2021	-	Support to Lao Microfinance Association and Training/coaching programme on agricultural finance and transformation of village banks into MFIs in Laos	ADA	944,828
2019-2021	-	Training in the financial sector	ATTF	150,000

*Together with Swiss Agency for Development and Cooperation (SDC) - Total: EUR 15,706,000

2. Multilateral Cooperation

Duration	Title	Execution Agency	Total Budget EUR
2017-2021	UN Joint Programme Phase II - Improving Reproductive, Maternal, Newborn and Child Health (RMNCH) in Lao PDR	UNICEF, WHO, UNFPA	7,452,315
2022-2025	UNJP Phase III	UNICEF, WHO, UNFPA	6,456,612
2017-2021	Moving towards achieving SDG 18 – Removing the UXO obstacle to development in Lao PDR	UNDP	600,000
2017-2021	Support Programme for NSEDP Implementation towards LDC Graduation, MIC Transition and SDG Achievement (Round table support extended to 2021)	UNDP	400,000

3. Cooperation with NGOs

Luxembourg Aid & Development is supporting three Luxembourg-based NGOs operating in Laos, namely Fondation Caritas Luxembourg, Handicap International Luxembourg and Care in Luxembourg.

With a co-financing rate of 80% the contribution from Luxembourg Development Cooperation amounts to EUR 3,983,358.20 from 2018-2025.

The NGO Aide au développement de la santé (ADS) receives funds to implement specific projects in the field of cardiology and cardiac surgery.

With a co-financing rate of 80% the contribution from Luxembourg Development Cooperation amounts to EUR 1,510,059.88 from 2019-2022.

Every year, the embassy of Luxembourg in Vientiane supports a number of micro-projects contributing up to EUR 15,000 for a maximum period of one year. These micro-projects are implemented by local civil society organisations.

Luxembourg contribution: EUR 50,000 per year.

4. Humanitarian Assistance

Duration	Title	NGO	Total Budget EUR
2022-2024	Integrated nutrition-sensitive food security and livelihoods for resilience in Northern Lao PDR	WFP	500,000
2021	Emergency COVID-19 project	Fondation Caritas Luxembourg	107,000
2021	Risk reduction project in the Kham, Nonghet and Houameang districts	Fondation Caritas Luxembourg	382,500
2021	Humanitarian flights	WFP	100,000

5. Regional Cooperation

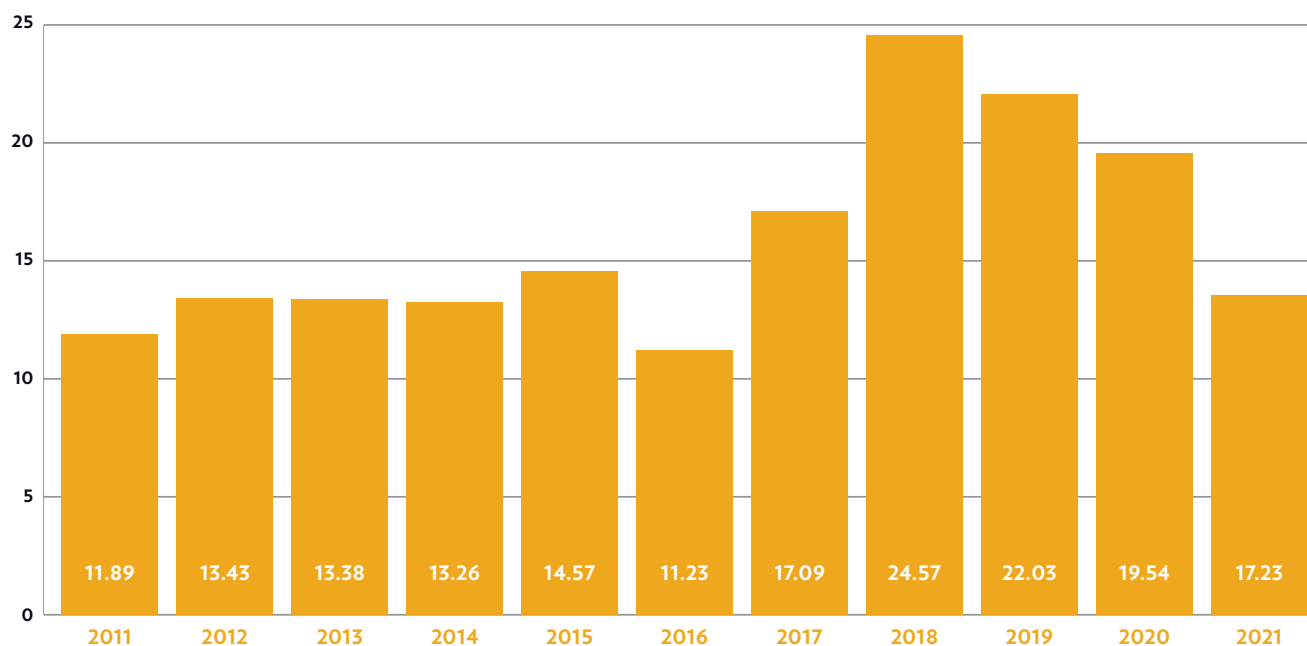
Duration	Title	Execution Agency	Total Budget EUR
2009-2022	Aid for trade	EIF	9,000,000
2016-2020	Support to the Mekong River Commission	MRC	1,000,000
2021-2025	Support to the Mekong River Commission	MRC	1,000,000
2018-2022	Mekong Region Land Governance Project - Phase II	Swiss Development Cooperation	1,350,000
2022-2025	Responsible Inclusive Finance Facility - South East Asia (RIFF-SEA)	Social Performance Task Force (SPTF)	989,996
2017-2022	Support to the extension of Social Health Protection in South-East Asia (Laos, Myanmar and Vietnam)	ILO	2,602,000
2019-2021	Supporting policy dialogue on national health policies, strategies and plans in six countries within the framework of the EU-Luxembourg-WHO Universal Health Coverage Partnership (UHC-P) - Phase III	EU-LU-WHO	8,800,000

6. Funding from other Luxembourg Ministries

Duration	Title	Organisation	Total Budget EUR
Ministry of the Environment, Climate and Sustainable Development (MECDD) - International Climate Finance			
2017-2023	World Bank Energy Sector Management Assistance Program	Climate and Energy fund	1,000,000
2019-2023	Care in Luxembourg- "Agro-Climate Information for the Adoption of Resilient Farming Practices and improved risk management by women and ethnic minority farmers"	Climate and Energy fund	459,550
Ministry of Finance - Fonds de lutte contre certaines formes de criminalité			
2019-2021	ILSTA: Strengthening of Laos' institutional capacities in the area of AML/CFT	Ministry of Finance	442,300
2015-2020	UNODC: LAO/Z49 - Houaphanh alternative development programme	Fonds de lutte	USD 2,800,000
2016-2019	ILSTA: Lao PDR - Capacity development to address narcotics trafficking	Fonds de lutte	280,000

Evolution of Funds disbursed

EUR millions



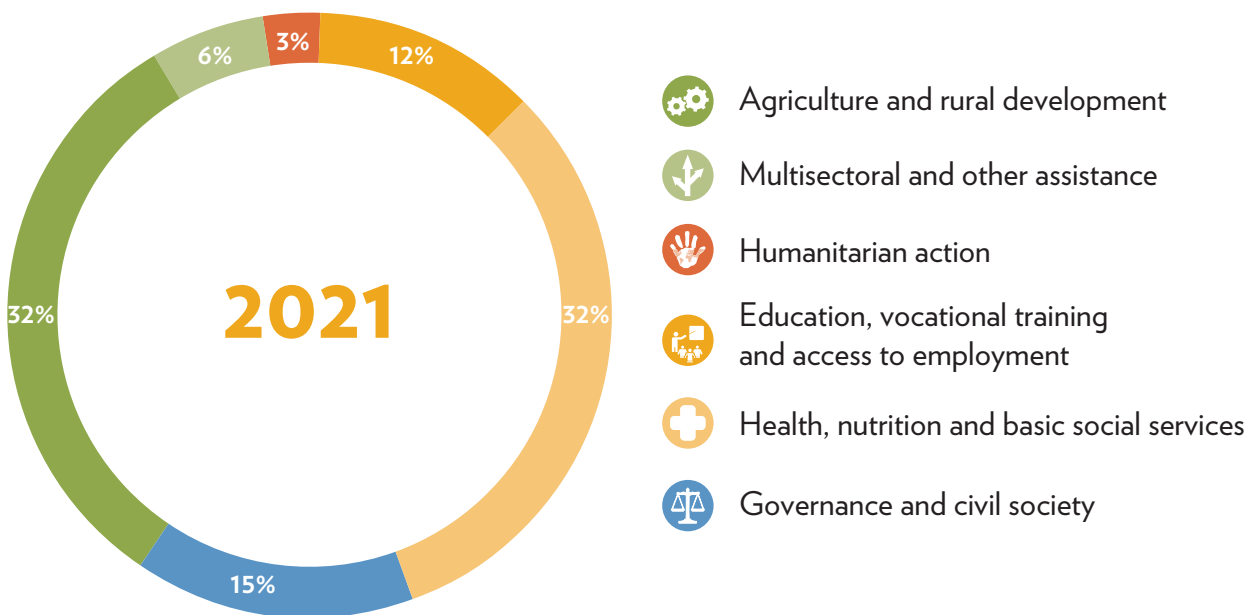
Distribution of Official Development Assistance (ODA)



ODA per sector

Development Cooperation

Laos 2021: EUR 17,23 million



Lao-Luxembourg Health Sector Support Programme-Phase II



2014-2022

LAO/027

The Grand Duchy of Luxembourg has been providing support to the health sector since the cooperation between Lao PDR and Luxembourg started in 1997.

The specific objective of the preceding project LAO/017 was to assist the Lao Ministry of Health (MOH) in implementing and operationalising its long-term Health Sector Strategy 2000-2020, Primary Health Care Strategy and Health Sector Development Plans, emphasising its eight priority programmes, with a view to implement quality health services for reaching a larger share of the population, especially the poorest, those at risk, and living in more remoted areas including ethnic minority peoples.

LAO/027 programme remains in that continuity, with a similar general objective, and a specific objective that aims at supporting the implementation of the updated sector policy (Health Sector Reform Framework 2013-2025) with a specific focus on mother and child health, by supporting district health systems and actors.

The programme is operational in the three provinces of Vientiane, Bolikhamxay and Khammouane. Efforts are being made to strengthen the Provincial Health Department roles and responsibilities, towards effective primary health care service delivery at district level and mother and child health activities.

The programme specialises in the development of a patient centered health care approach, including specific focus on priority target groups such as pregnant women and children under five years. The programme is designed to support the MOH in implementing the Health Sector Reform framework 2013-2025, prioritising access to quality mother and child health services through the strengthening of health districts in the three central provinces.

Key results by 2021:

- implementation of the fourth funding cycle of the Joint Participatory Mechanism (JPM) focusing on MNCH service delivery and management performance have gradually been improved;
- 115 scholarships awarded (more than 60% are female recipients) for long and short-term studies in clinical and health-related subjects;
- MNCH care and nursing management in target district hospitals and health centers are being strengthened through regular field supervision from nurse-midwife trainer advisor teams;
- 70 provincial and district Health Insurance Bureau (PHIB/DHIB) staff were trained to strengthen their skills in managing inclusive national health insurance;
- successful completion of construction and renovation works in district hospitals in Bolikhamxay and the provincial hospital in Khammouane; and
- distance learning carried out through the LuxNet training platform in MOH, target districts and provincial hospitals, and provincial and district health departments.

Luxembourg contribution: 36,356,147 EUR

Closed circuit security glove box to handle severe pathogens ►



Skills for Tourism-Human Resources Development in the Tourism and Hospitality Sector



2016-2022

LAO/029

With one of the youngest populations in the Association of South East Asian Nation (ASEAN) region, Lao PDR is expected to benefit from a 'demographic dividend' to the economy in the medium-term, particularly if young women and men are equipped with the appropriate skills and knowledge for the workplace. The economy of the country is changing, with a reduced reliance on agriculture and an increase in the industry and service (including tourism) sectors. Developing tourism and ensuring that Lao people are able to take full advantage of the employment opportunities the sector offers is a priority for the country and is in line with the vision and objectives of the ninth National Socio-Economic Development Plan 2021-2025 and Lao PDR Tourism Strategy 2006-2020. Therefore, Luxembourg and Switzerland have joined hands with Lao PDR to implement the Skills for tourism project which supports improvements in tourism/hospitality (T/H) vocational education and skills development. A particular focus of the project is to support people from disadvantaged backgrounds to acquire the skills needed for direct employment in the sector or engage indirectly in the wider tourism economy. Furthermore, effort is being made to ensure COVID-19 recovery through the LaoSafe, a health and hygiene programme to improve practices and build consumer confidence in the Lao T/H sector.

The project will directly support as many as 5,000 beneficiaries in training and finding employment in the T/H sector, including a specific focus on young people between 15 and 35 (75% of target), women (60% of target) and disadvantaged people (50%).

The project operates at various governance levels. At the macro level, it supports policy dialogue, capacity development and coordination support to national institutions. At the meso level, the project is supporting alignment and enhancement of the quality and volume of skills development and vocational training. At micro level, affirmative

action support is being provided to disadvantaged young people by improving awareness of tourism and hospitality education, training and employment opportunities, defining career paths and eliminating access barriers.

Key results by 2021:

- T/H practical training facility at the Vientiane Province TVET College campus in Vang Vieng district is now fully operational;
- over 11 000 people (71% women) have completed/are undertaking project-supported tourism/hospitality vocational education and skills development training programmes, of which 84% from disadvantage backgrounds;
- more than 1,900 participants have completed or currently enrolled in tourism and hospitality vocational education and skills development programme supported by the project;
- 17 TVET schools/colleges have their equipment put in place to improve deliver practical T/H lessons and improve the quality of TVET teaching and learning;
- successful rolled out of basic vocational skills training to 590 trainees, including the expansion to rural settings in Vientiane Province in cooperation with the LAO/030 LuxDev local development programme;
- 80 students benefited from T/H certificate programmes delivered by 5 public TVET public institutions; and
- LaoSafe, a health and hygiene programme launched to improve practices and build consumer confidence in the Lao T/H sector, and roll-out in Vientiane Capital.

Luxembourg contribution: EUR 7,853,000

Local Development Programme for Bokeo, Bolikhamxay, Khammouane and Vientiane Provinces



2016-2022

LAO/030

The Local Development Programme for Bokeo, Bolikhamxay, Khammouane and Vientiane Provinces supports rural poverty reduction in disadvantaged upland and highland areas of Lao PDR. Such areas are experiencing widening gaps with urban and lowland areas in terms of poverty and social services, and the environmental conditions are generally deteriorating, which exacerbates poverty and climate change vulnerability. The programme tackles these problems through a two-tiered approach, combining practical local development with governance strengthening.

The practical development work focuses on the 14 poorest districts in four target provinces, particularly 229 target villages with a population of 150,000, 74% of whom are ethnic minorities.

Since poverty reduction is the overall objective, as much as 60% of the over EUR 32.4 million budget from the government of Luxembourg is spent directly in the target villages. About half of this amount is used for community-led initiatives channeled through village development funds managed by each community. This supports, for instance, sanitation, upgrade of schools, land management, agricultural extension, training, credit schemes and special support to destitute households.

The other half of the practical development budget is allocated for infrastructure development, mostly education facilities and improved water supply systems. This helps overcome major problems with low sanitation, high stunting rates, and low educational outcomes. The construction programme is carried out by the relevant provincial or district departments according to government procurement and building standards, which at the same time enhances capacity and decentralisation in these fields.

The governance strengthening accounts for 30% of the budget and focuses on improving the systems and capacity for more effective poverty reduction. This includes:

- improved development planning, monitoring and evaluation at national and local level;
- development partner coordination;
- investment management;
- and information systems.

The project is operated jointly by the Ministry of Planning and Investment and LuxDev. The Provincial Planning and Investment Departments and District Planning Offices are coordinating the field implementation. For technical support, relevant sector departments are engaged, particularly in agriculture, education, health and public works.

Key results by 2021:

- 984 Village Development Fund activities (such as meeting halls, water supply, access roads, school repairs or upgrades, etc.) were completed in 229 target villages, bringing the total to 2,579 individual sub-projects identified, planned and implemented by the communities under the community-led development component;
- 77 rural infrastructure were completed, mostly community water supplies, schools, dormitories, and bridges;
- the nutrition-related actions of LAO/030 and the local nutrition coordination facilitated by Caritas Luxembourg formed a coherent example of application of the Lao government's nutrition strategy; and
- a new collaboration with Mines Advisory Group helped clear UXOs in 14 project sites in Boulapha District.

Luxembourg contribution: EUR 32,409,343

Support Programme for Legal Teaching and Training and to the Promotion of the Rule of Law Concept in Laos



2017-2022

LAO/031

In 2009, Lao PDR adopted a Legal Sector Master Plan (LSMP) that establishes the framework to develop effective institutions in the entire legal sector as the foundation for the Rule of Law.

Furthermore, the Lao PDR's 9th National Socio-Economic Development Plan (NSED) 2021-2025 aims to facilitate the graduation from Least Developed Country status and to consolidate regional and international integration in the context of the Association of Southeast Asian Nations (ASEAN) economic community. Among the cross-cutting issues addressed by the NSED is the enhancement of the effectiveness of the public governance and administration. These goals highlight the need to develop a law system that is complete, harmonised, clear, reliable and accessible to everybody.

Positive trends have been triggered through the previous Luxembourg-funded project LAO/023 in order to strengthen the higher education in the legal sector. However, complying with ASEAN standards and updating the curricula towards the evolution of the legal framework requires a constant effort for improving further the efficiency of the faculties.

Access to justice also needs to be further strengthened. As stated in the LSMP, there are "insufficient conditions to allow people access to justice by them selves or through lawyers or other guardians in all levels of the court proceedings and in all cases to secure the rights in obtaining legal assistance, especially for the poor and people having less opportunity".

Based on these challenges, LAO/031 has two specific objectives:

- the reinforcement of the enabling environment for access to justice, which should lead to strengthened access to justice;
- the continuation of the strengthening of legal education and training, which should lead to improved legal higher education and strengthen institutional capacity.

The project in cooperation with the Institute for Legal Support and Technical Assistance (ILSTA), works with the main beneficiaries who are legal practitioners and civil servants active in the legal sector, civil servants of the Ministry of Justice, and academic staff, notably of the Faculty of Law and Political Science (FLP) of Vientiane Capital and the Faculty of Law and Administration of Champasak.

Key results by 2021:

- 2,441 legal practitioners and civil servants benefited from legal training, workshops, seminars and lectures;
- Four key policies document revised, adopted and disseminated including:
 - document to implement the Development Plan for the Justice Sector for the period 2021–2025,
 - Human Resource Strategic Plan for the Justice Sector until 2025,
 - Law on Notary Public, and
 - Village Mediation Committee Decree;
- 95 teachers and students at FLP benefited from a special lecture on "The New Procedures of Enterprise Registration";
- Eight textbooks related to law subject under the new curricula were disseminated, and two guidelines, on "Internships" and on "Internal Quality Assurance", were adopted by FLP ;
- 11 additional District Legal Aid Offices established in Bolikhamxay and Khammouane Province; and
- 154 academic officers from FLP, FLA and NIJ benefited from the workshops on "Referencing Style for Legal Research and Applied Socio-Legal Research Methodology".

Luxembourg contribution: EUR 8,948,217

Support to the Triangular Cooperation in the Finance Sector between Vietnam, Laos and Luxembourg



2020-2023

LAO/032

Since its establishment in 2010, the Lao securities market has provided a new channel for capital raising, but the market currently does not have the scale and quality to provide for long term investment and capital formation in a fast-growing economy. The market capitalization is small, with low liquidity and lack of products. The investor base is narrow, and their structure does not support expansion of capital market of Lao PDR in the long run. Financial intermediary institutions and the number of certified securities market professionals are limited in number.

LAO/032 aims to contribute to the development of the securities market of Lao PDR. More specifically, the project aims to reinforce the Lao Securities Commission Office (LSCO), where the Government's Strategic Plan on Capital Market Development of Lao PDR for the 2016-2025 will serve as a key reference. At project completion, the number of listed companies and investors in the Lao stock market should have increased, the human resources capacities of the LSCO and the securities market professional community should be strengthened with domestic investor understanding and awareness should be increased.

The project's strategy of intervention is set in a triangular context of cooperation between the project partner countries Laos, Vietnam and Luxembourg with the Lao project stakeholders being the targeted beneficiaries. Through triangular cooperation with Vietnam and in line with the existing 10-year Memorandum of Understanding (MoU) on Information Exchange and Mutual Assistance between LSCO and the Vietnam State Securities Commission (SSC), the project can benefit from the lessons learned gained during previous and ongoing securities market development projects in Vietnam. Luxembourg is facilitating a South-South cooperation initiative between Lao and Vietnam and will bring its financial sector know how expertise.

Key results by 2021:

- completion of a scoping study on the requirements and policy analysis on domestic laws and regulations, foreign investor requirements and international market criteria of listing standards and Initial Public Offering (IPO) roadmap;
- 304 participants benefited from trainings, workshops and meetings supported by LAO/032, of which 233 were from regulators and public organizations, and 72 were from the private sector;
- Lao Security Commission Office's (LSCO) library established, which will facilitate learning and teaching;
- securities market curricula and trainings courses related to capital market knowledge developed and provided;
- training of trainers hybrid (online and face-to-face) training on the Fundamental Analysis on Stock and Financial Statement Analysis for Investment organised for 95 core trainers of LSCO and market participants, with 80% of the participants being highly satisfied with the trainings provided.

Luxembourg contribution: EUR 500,000



Strengthening the Effectiveness of Official Development Assistance Management in Laos

2019-2023

LAO/033

Lao PDR aims to graduate from Least Developed Country (LDC) status. At the same time, progress will be made towards meeting the Sustainable Development Goals (SDGs). Implementation of the SDGs is embedded in the country's 9th National Socio-Economic Development Plan (NSEDP) which reflects six main development outcomes. A mid-term review of the 8th NSEDP showed that the graduation process will have a slowing effect on the level of Official Development Assistance (ODA) financing in the country. Furthermore, traditional ODA will decline even without LDC graduation as the country's income continues to grow. Therefore, there will be increasing pressure to adapt to this new reality and use ODA resources effectively.

LAO/033 is a capacity strengthening project that aims to address ODA management needs of the Ministry of Planning and Investment's Department of International Cooperation (DIC) and six provincial Sections for international Cooperation (SICs).

The project will also provide capacity strengthening for the Department of Inspection at MPI, particularly in relation to anti-corruption measures as well as the SDG Secretariat housed in the Ministry of Foreign Affairs.

The project's overall objective is that ODA effectively supports implementation of NSEDP whilst the specific objective is that key Lao agencies can effectively manage and coordinate ODA.

The project focuses on two results:

- the capacity of DIC to effectively manage and coordinate ODA through provincial SICs and line ministries and report timely on ODA; and
- the cross-cutting issues reflected in SDGs are appropriately considered in ODA interventions and support NSEDP.

Key results by 2021:

- endorsement of staff capacity strengthening strategy and action plan for the DIC and six SIC;
- guidelines on the management and utilisation of government counterpart funds for the implementation of ODA, developed and endorsed by the MPI;
- key staff from line ministries and provinces completed their ODA Decree and ODA mobilisation strategy through dissemination workshops, 71% of attendees reported their knowledge increased;
- 19 (9 females) DIC and six SICs officials benefited from the formal English training programmes;
- 32 officials (22 females) from line departments from the Ministry of Planning and Investment (MPI), six target provinces via the Section of International Cooperation and the National SDG secretariats as Department of International Organization, Ministry of Foreign Affairs, trained on leadership and effective communication; and
- SDG advocacy information material developed and widely shared with the public.

Luxembourg contribution: EUR 1,300,000

Monitoring and evaluation training ▼



PARECIDS III-Luxembourg-Laos Partnership for Research and Capacity Building in Infectious Disease Surveillance



2021-2026

In the framework of the PaReCIDS programme, a laboratory specialised in infectious diseases has been set up at the Pasteur Institute in Vientiane. The programme is implemented by the Institute of Health of Luxembourg. Support is also provided to a team of Lao researchers to allow them to further develop their knowledge and to facilitate their integration in the international scientific community. Part of the Lao-Luxembourg Lab's research is focusing on infectious diseases and as such plays an important role in the identification of different ste-

reotypes of identified viruses. Phase II of the project was extended by five months to allow for the catching up of delays caused by the COVID-19 pandemic. Phase III succeeds two prior editions of research programmes during the period 2010-2015 and 2016-2020 and represents a continuation of the previous phases, while placing a strong emphasis on strengthening laboratory and individual research capacities, in line with the overall ICP V focus.

Luxembourg contribution: EUR 3,129,394

Inter-University Cooperation between the University of Luxembourg and the National University of Laos - Faculty of Law - Phase II



2021-2024

The project supports the cooperation and academic exchange between the University of Luxembourg and the National University in Laos within the Faculty of Law in the field of law, training of trainers, as well as documentation and research. Further, the project also contributes to the strengthening of good governance in the country. This cooperation aims to strengthen the legal higher education for students as well as for law practitioners in the field to contribute to the consolidation of the rule of law in Laos. Over the years, several short-term exchanges between the universities are rolled out for lecturers, students, researchers and administrative staff. These include the teaching of lectures, summer/winter

schools for lecturers and PhD students, research support visits in Luxembourg and Laos for students, capacity building for staff as well as staff mobility allowing for mutual exchanges between teachers. The second phase of the project is part of the ICP V and its actions aim to support and expand Laos' vision of strengthening the legal sector in line with the country's Vision 2030, which aims to establish good governance based on the rule of law. The project aims to bring together academics from both countries to create an advanced level of legal education and research.

Luxembourg contribution: EUR 1,396,700

Cooperation between National Institute of Statistics and Economic Studies of Luxembourg (STATEC) and Lao Statistic Bureau (LSB) – Phase II



2021-2026

The project puts into place a cooperation between the two national statistics offices LSB and STATEC. The objective of this cooperation is to support the development of the statistical activities lead by LSB in order to improve the quality of data collection and the production of reliable statistics that comply with international standards and guidelines.

The second phase of the project will continue focusing on developing the domain of environmental and social statistics, supporting the household survey and

exchange on the good practices of management of a national statistical system. A new component that was introduced for the second edition of the project is the creation of a business register and the production of economic statistics. The continued strengthening of statistical data collection and management is an important component that will horizontally support the achievement of results in the priority intervention sectors of ICP V.

Luxembourg contribution: EUR 2,048,300

ADA - Support to Lao Microfinance Association and Training/ coaching programme on agricultural finance and transformation of village banks into MFIs in Laos



2018-2021

ADA, a Luxembourg NGO specialised in inclusive finance, has worked in partnership with the Lao Microfinance Association (MFA) since 2010 in promoting financial inclusion for the Lao people, especially low-income populations, through the consolidation and professionalization of the microfinance sector. The main objectives of the partnership are to professionalise the association and improve both the services to its members and sector-wide communication and transparency. ADA has extended its support to the financial inclusion sector in Laos for the period 2018-2021, with the MFA as the key partner on the ground ensuring an enabling environment for the sound development of financial inclusion in Laos. Considering that formal financial institutions still only offer limited services to

agricultural households, ADA, together with FAO, developed a technical support offer. Training was provided to more than 20 Microfinance institutions (MFIs). The aim was to ensure that farmers and other agricultural value chain actors have access to financial services adapted to their needs, enabling them to improve their living conditions.

Since 2019, ADA supports LuxDev in the implementation and formalisation of new and previously established village banks, and in their transition to sustainable financial service providers. ADA is implementing this project also in partnership with MFA. Additionally, three MFIs benefited from support from the COVID-19 crisis response program set up by ADA in 2020.

Luxembourg contribution: EUR 944,828

BILATERAL COOPERATION



ATTF - Training in the financial sector

2019-2021

In 2019, the House of Training - ATTF launched a training programme mobilizing the expertise and potential of the Luxembourg financial center in support of international development. Despite the inability to travel during much of the reporting period, the programmes went ahead smoothly in digital format. The Bank of the Lao PDR (BOL) has been an able and committed partner, whose efforts have

been central to the delivery of the agreed activities. The training programmes have enjoyed strong interest from well selected local financial sector professionals and have covered subjects including: AML, digitalisation in banking, SME financing, retail banking strategy, selling of financial services, risk management and credit assessment.

Luxembourg contribution: EUR 150,000

MULTILATERAL COOPERATION

UN Joint Programme on Reproductive, Maternal, Newborn, Child and Adolescent Health (RMNCAH) in Lao PDR



2022-2025

Entering its third phase, the United Nations Joint Programme (UNJP) for Reproductive, Maternal, Newborn, Child and Adolescent Health (RMNCAH) will support the implementation of the Government's new National RMNCAH Strategy 2016-2025 and the Action Plan for 2021-2025. This UNJP is implemented by 3 UN agencies, namely UNICEF, WHO and UNFPA in close collaboration with the Ministry of Health.

The proposed programme will focus on policy dialogue as well as the development and implementation of the National Reproductive, Maternal, Newborn, Child and Adolescent Health (RMNCAH) strategy at the central level. These activities will be accompanied by interventions at the local level in 3 provinces (Bokéo, Bolikhamxay and Savannakhet) in order to generate results and lessons that can be used to inform national scale-up.

This third phase is closely aligned with the objectives of the ICP V and the bilateral health and local development programs, relying on the same methods of financing and planning at the local level (JPM, village development committee). While the results of the second phase of the program have been considerable, this phase will offer further support to ensure the full integration of vertical RMNCAH interventions in the system which will lead to a more comprehensive approach centered around primary health care and reinforce the long-term sustainability of the results achieved and the interventions supported.

Luxembourg contribution: EUR 6,456,612 EUR

Moving towards achieving SDG 18 – Removing the UXO obstacle to development in Lao PDR - Phase VI



2017-2021

Luxembourg has been financially supporting UXO clearance since 1999 with a total contribution of USD 2,732 million. The current phase continues previous clearance activities focusing on the nine provinces bordering Vietnam. The UXO clearance programme has been identified by the Lao government in the 7th National Socio-economic Development Plan as a main building block in supporting development, especially in rural areas. In recognition of the

constraints posed by UXO clearance to national development, the Lao government defined the reduction of UXO contamination as an additional, ninth MDG. Luxembourg's contribution is used to support clearance operations, training and equipment of clearance teams, as well as communication campaigns on threats posed by UXO and the principles of the Oslo Convention on cluster munitions.

Luxembourg contribution: EUR 600,000

UNDP–Support Programme for NSEDP Implementation towards LDC Graduation, MIC Transition and SDG Achievement



2017-2021

Since 2007, Luxembourg has been supporting UNDP in the implementation of the annual Round Table Meeting, which gathers all development actors in Lao PDR with the aim of improving donor coordination and aid effectiveness in line with the principles of the Paris declaration and its local version, the Vientiane declaration on aid effectiveness. More specifically, the project aims to strengthen capacity of the Lao government to manage donor

coordination and discussions at sectorial as well as at national level. It is focusing in particular on the Department for International Cooperation of the Ministry of Planning and Investment, which is in charge of coordinating Sector Working Groups and the Roundtable process and, which culminates yearly in the Roundtable Meeting.

Luxembourg contribution: EUR 400,000

NGO Projects

Three Luxembourg NGOs are currently implementing activities under a framework agreement with the Directorate for Development Cooperation; namely, Fondation Caritas Luxembourg, Handicap International Luxembourg and Care in Luxembourg. They support interventions in the field of rural development, vocational training, in health service delivery and improving the living conditions of persons with disabilities.

With a co-financing rate of 80% the contribution from Luxembourg Development Cooperation amounts to EUR 3,983,358 from 2018-2025.

Every year, the embassy of Luxembourg in Vientiane supports a number of micro-projects contributing up to EUR 15,000 for a maximum period of one year.

The NGO Aide au développement de la santé (ADS) receives funds to implement specific projects in the field of cardiology and cardiac surgery.

With a co-financing rate of 80% the contribution from Luxembourg Development Cooperation amounts to EUR 1,510,060 from 2019-2022.

These micro-projects are implemented by local civil society organisations.

Luxembourg contribution: EUR 50,000 per year

Integrated nutrition-sensitive food security and livelihoods for resilience in Northern Lao PDR

2022-2024

Following the COVID-19 pandemic, Laos is currently facing a socio-economic crisis, exacerbated by a food crisis and high inflation rates. Vulnerable communities in remote rural areas are risking low agricultural outcomes and rising malnutrition among the communities. The WFP is supporting poor households in northern Laos in order to benefit from improved food security and increased capacities for disaster risk reduction associated to climate change.



Emergency COVID-19 project

2021

In response to the Covid crisis, the Ministry financed an emergency project of Fondation Caritas Luxembourg (EUR 107,000). The aim of this contribution

was to raise the awareness of the local population and to protect medical frontline staff.



WFPs humanitarian flights

2021

The WFPs humanitarian flights into Laos were supported by Luxembourg in 2021 with a grant of EUR 100,000. These flights created a reliable air

bridge to allow humanitarian actors and cargo to enter the country during the COVID-19 pandemic.



Risk reduction project in the Kham, Nonghet and Houameang districts

2021

In 2021, the Ministry co-financed a risk reduction project of Caritas Luxembourg (EUR 382,500). This project prioritised capacity building regarding

Disaster Risk Reduction Management and Crisis Response of different stakeholders (for example local authorities).

COVID-19 response

Despite being largely unaffected from a health perspective, the first wave of the COVID-19 pandemic, in 2020, has severely affected economic growth in Laos and contributed to raising unemployment and the cumulative impact of the pandemic is expected to roll back some of the major poverty reduction gains achieved between 2013 and 2019. Lao was hit hard much later than most countries due to its protective measures, but finally was not able to avoid a large community spread with many cases around the country.

Despite this challenging context, ongoing projects have been able to adapt quickly to these changing circumstances and have continued to provide inval-

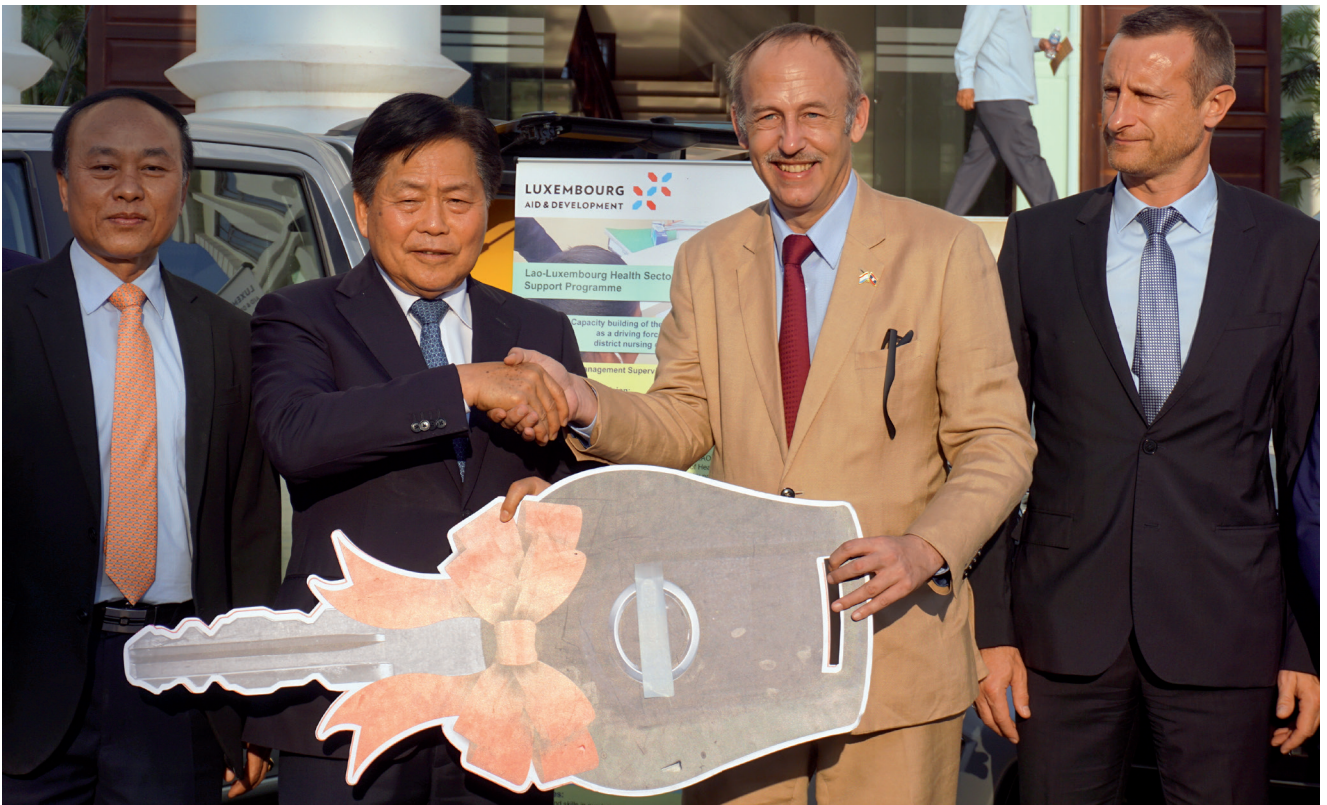
uable services to their counterparts and target beneficiaries, albeit at a slightly slower pace than usual. Luxembourg has been able to quickly create an emergency COVID-19 response for the Lao PDR, with a budget of over EUR 4.5 million, successfully implemented mainly, by the health (LAO/027) and local development programmes (LAO/030), as well as WFP and the Institute Pasteur du Laos and responded to critical health and food insecurity needs at both central and provincial levels with an invaluable relief valve for beneficiaries.



Dispatch of equipment ▲



Community outreach mother-and-child care in Bolikhamxay province ▲



'Decontamination Unit' Vehicles hand over to the Ministry of Health, Vientiane Province ▲

Key achievements

- COVID-19 support with an additional budget of EUR 4.5 million has been implemented since mid 2020.
 - with EUR 3 million that were been reprogrammed for the COVID-19 response, in 2020, Luxembourg Development Cooperation was among the first donors to respond quickly and effectively to the health and economic needs linked to the COVID-19 situation at the central and local level,
 - of these EUR 3 million, the Luxembourg Cooperation, through the WHO, contributed EUR 2 million to the strengthening of the national coordination system and provided material and equipment for virus testing to its long-standing partner, the Institut Pasteur du Laos, as well as protective equipment, and
 - materials to the four provinces of intervention to meet the most urgent needs, including the purchase of high-tech ultra-cold freezers made by BMedical in Luxembourg to store vaccines in optimal conditions,
 - so far in 2021, following the second wave, an additional EUR 1 million allocated to cover the most urgent needs identified by the MoH Lao health officials in the capital, but also for the health facilities in the three intervention provinces covered by the health project (LAO/027). The amount was dedicated to support the acquisition of protective equipment and consumables, screening and reception of quarantined patients, logistical efforts to transport samples and institutional support for the coordination and supervision of the national response plan;
- EUR 100,000 were allocated to WFP in support of the regular humanitarian workers and cargo flights in and out of Laos and Myanmar to transport COVID-19 vaccines, as only reliable connection since the beginning of the pandemic.
- the tourism/hospitality sector programme (LAO/029) supported the following national initiatives to counter the negative effects of COVID-19:
 - Lao Thiao Lao domestic tourism marketing campaign,
 - LaoSafe: a hygiene programme that will support tourism and hospitality enterprises to access training, assessment and become accredited as businesses that follow strict standards on hygienic practices;
- the legal education and rule of law programme (LAO/031), as well as the interuniversity programme were able to adapt to the situation and switched to online modality whenever possible in order to continue training legal practitioners and law students.

Aid for Trade – Enhanced Integrated framework



2009-2022

Luxembourg is engaged in the area of Aid for Trade, aimed at creating a context conducive to economic development. The Enhanced Integrated Framework (EIF) is the only multilateral partnership dedicated to assisting Least Developed Countries (LDCs) use trade as an engine for growth, sustainable development and poverty reduction. It helps LDCs, including Lao PDR, to play a more active role in the multilateral trading system. With EIF support, Lao PDR developed a Trade and Private Sector Development

Roadmap that has served as the main instrument for the country's Aid for Trade harmonisation, resource mobilization and coordination efforts. Analytical work has been used to enhance Lao PDR's export diversification and to promote sectors with high added value and social impacts, like maize, tea or handicraft, in order to ensure that trade improves the livelihoods of the poor.

Luxembourg contribution to the overall programme:
EUR 9,000,000

MRC–Mekong River Commission



2016-2020 and 2021-2025

Luxembourg is contributing with other donors to the MRC Basket Fund, which is a joint financial mechanism whereby member countries and development partners contribute funds to a common pooled account that is used to fund specific clusters of activities (MRC core functions).

The MRC core functions supported by the basket fund include:

- corporate services functions: provide for the management and administration of the Secretariat, support to the MRC governance and dialogues processes among Member Countries and with MRC's partners, and support to non-technical

processes under the 1995 Mekong Agreement as well as communication with MRC's stakeholders and general public;

- core river basin management functions (CRB-MFs): include data acquisition, exchange and monitoring, analysis, modelling and assessment, planning support, forecasting, warning and emergency response and implementing MRC Procedures.

Luxembourg contribution
2016-2020: EUR 1,000,000
2021-2025: EUR 1,000,000

Mekong Region Land Governance Project – Phase II – in cooperation with Switzerland



2018-2022

Since April 2014, the Mekong Region Land Governance Project (MRLG) aims to improve land tenure security of smallholder farmers in the Mekong Region through contributing to the design and implementation of appropriate land policies and practices. It responds to national priorities in terms of reducing poverty, increasing economic development and supporting smallholder farmers, so that they can be secure and make good decisions on land use and land management. A first phase of four years has allowed MRLG to build partnerships and support a number of initiatives aiming at improving land tenure security for smallholder farmers across Cambodia, Laos, Myanmar and Vietnam (CLMV). MRLG Phase I implemented diverse and innovative activities across a large spectrum of land governance

and land tenure-related issues, worked with a broad range of partners, (including CSOs, academia, research institutes, government departments, agencies, and the private sector), and deployed multiple instruments in its operations. This included small and larger grants, workshops, training events, technical assistance, knowledge products, conferences, networking, alliance-building, etc. Built on Phase I successes, the MRLG project Phase II remains focused on addressing land governance issues in the CLMV region, but with a shift towards supporting the strategic engagement of reform actors in the policy making processes at national, sub-national and regional levels.

Luxembourg contribution: EUR 1,350,000

Responsible Inclusive Finance Facility - South East Asia (RIFF-SEA)



2022-2025

The Social Performance Task Force (SPTF) launched a facility for responsible inclusive finance in South East Asia, which allows the roll-out of its universal standards for social performance management (USSPM) among financial service providers in the region.

In Laos, RIFF-SEA has steadily built the capacity of consultants and financial service providers to improve social performance management. RIFF-SEA provided training of the Executive Director

of the Lao Microfinance Association (LMFA) to become an accredited SPI auditor.

RIFF-SEA also trained the Bank of Laos (BoL) on how improved SPM supports the Bank's financial inclusion strategic roadmap and its pursuit of the Sustainable Development Goals.

Luxembourg contribution: EUR 989,996

ILO - Support to the extension of Social Health Protection in South-East Asia



2017-2022

Today nearly 73% of the world's population lacks access to adequate social protection coverage. The importance and potential of social protection in reducing poverty and inequalities and contributing to a more inclusive and sustainable economic development is recognised in the Sustainable Development Agenda. Luxembourg is a longstanding development partner to the International Labour Organisation (ILO) and founder of its flagship programme on social protection and is collaborating with the ILO's flagship programme in several key countries focused on the installation of social health protection schemes. The project "Supporting the establishment of the National Health Insurance scheme and the extension of coverage in Lao PDR" funded by Luxembourg was implemented jointly by the ILO and the World Health Organisation (WHO) from 2012 to 2016 and provided crucial support to ongoing reforms on social health protection in Lao PDR. In 2017, the Luxembourg development cooperation signed a new Partnership Agreement with the ILO for the achievement of social protection

targets under the SDGs. The subsequent phase of the project, with a budget of EUR 2,602,000 aims to extend social security and implement social protection to an entire region, including South-East Asia, starting with Laos, Myanmar and Vietnam. This innovative project aims at establishing a regional service operating as a cornerstone for the extension of the benefits of the project throughout the whole region.

Luxembourg contribution to the overall programme:
EUR 2,602,000

Supporting policy dialogue on national health policies, strategies and plans in six countries within the framework of the EU-Luxembourg-WHO Universal Health Coverage Partnership (UHC-P) - Phase III



2022-2024

In addition to the multi-bi projects funded within the framework of the ICP, Luxembourg Development Cooperation has been supporting the Universal Health Coverage Partnership (UHC-P), hosted by the WHO, since 2013 and recently decided to extend its support for a fourth phase (2022-2024) to seven countries (Burkina Faso, Cabo Verde, Lao PDR, Mali, Niger, Rwanda, Senegal).

Universal health coverage (UHC) ensures equitable and affordable access to quality health services and care, and the Universal Health Coverage Partnership provides in-country support for health system strengthening towards universal health coverage. Since 2015, a senior expert assists the WHO country office in Vientiane on normative work, to develop and implement robust national health policies and related policy dialogue around universal health coverage and primary health coverage.

The key priorities of the UHC-P in Lao are strengthening governance, human resources for health and health financing. These are placed within the overarching goal that Lao has set itself, namely to achieve UHC for its entire population by 2025 and sustainable development goals by 2030. The activities of the UHC-P are complementary to the bilateral health programme LAO/027 and fit perfectly within the larger health sector reform that Lao is undertaking.

The UHC-P has been critical in providing support to the Ministry of Health in strengthening health gov-

ernance, including sector-wide coordination mechanism for effective donor coordination in the health sector. With support from the UHC-P, the (draft) Health Sector Reform Strategy 2021-2030 has been developed. The Health Sector Reform Strategy 2021-2030 provides a set of priorities in Lao PDR's journey towards UHC.

The UHC-P, amongst others, aims to improve sustainable health financing in alignment with the Health Financing Strategy and strengthen strategic purchasing capacities of the National Health Insurance Bureau for the National Health Insurance Schemes at provincial and district levels based on the costing exercises and verification exercises, as well as to support the implementation of the National Health Insurance scheme at the national level with focus on protection of the poor and vulnerable to progress towards UHC in the context of COVID-19 and donor transition. With regards to human resources for health (HRH), based on a review of the Strategy for the development of health personnel 2010-2020, the (draft) Human Resources for Health Development Strategy by 2030 is being finalised to provide overall guidance and strategic priorities for HRH development for the next decade. HRH has been identified as one of key priorities to improve the quality and safety of healthcare services in the country, which is essential to achieve UHC.

Luxembourg Contribution to the overall programme covering the six countries: EUR 8,800,000

OTHER CONTRIBUTIONS BY LUXEMBOURG GOVERNMENT

MINISTRY OF THE ENVIRONMENT, CLIMATE AND SUSTAINABLE DEVELOPMENT -
INTERNATIONAL CLIMATE FINANCE

World Bank Energy Sector Management Assistance Program

2017-2023

In 2017, Luxembourg provided a financial contribution to the World Bank Energy Sector Management Assistance Program for the preparation of a project, the LAO PDR Clean Cook Stove Initiative. The project is considering the distribution of 50,000 clean cook stoves across eight to eleven districts in three provinces (Vientiane Capital, Savannakhet

and Champasack) in Laos, to enhance energy efficiency in cookstoves and aims at quantifying benefits in terms of reducing CO₂ emissions and gender equality.

Luxembourg contribution through the Climate and Energy Fund: EUR 1,000,000

Care in Luxembourg- “Agro-Climate Information for the Adoption of Resilient Farming Practices and improved risk management by women and ethnic minority farmers”

2019-2023

This project will be implemented in Sekong province, in the districts of Dak Cheung and Kaleum, and concerns 10 villages. This province in Southern Laos has the highest poverty rate in the country and the population is very vulnerable to climate change. Especially women, who are among the hardest hit, struggle to recover from the consequences of extreme weather events and have no alternative sources of income. To address this situation, the objective of the project is to improve beneficiaries' access to climate information (climate information

services and early warning information systems for disaster risk reduction) and agricultural planning. Beneficiaries will be trained in innovative and intelligent farming practices. The proposed activities, which are aligned with relevant national strategies, will target a total number of 5,000 beneficiaries, with a main focus on women and farmers from ethnic minorities.

Luxembourg contribution through the Climate and Energy Fund: EUR 459,550

OTHER CONTRIBUTIONS BY LUXEMBOURG GOVERNMENT

MINISTRY OF FINANCE: *FONDS DE LUTTE CONTRE CERTAINES FORMES DE CRIMINALITÉ*

UNODC : LAO/Z49 - Houaphanh Alternative Development Programme

2015-2020

The programme aims to reduce and eliminate opium poppy cultivation in Houaphanh province of Lao PDR by enabling opium dependent impoverished communities in target villages to gain sustainable licit income alternatives. The focus is on developing and implementing sustainable alternative development interventions, including the introduction of appropri-

ate technologies to increase yield and productivity of food and permanent cash crops, diversification of income through on-farm and off-farm licit income-generating activities, provision of detoxification and treatment services to people affected by opium dependence.

Luxembourg contribution: USD 2,800,000

ILSTA: Strengthening of Laos' institutional capacities in the area of AML / CFT (Phase II)

2019-2021

Phase I of the project (2016-2018) aimed at strengthening the capacity in Lao PDR of criminal justice institutions, helping government law enforcement bodies to prevent, investigate and prosecute cases of organized crimes and money laundering, as well as enhancing international co-operation. This contribution to the Institute for Legal Support and Technical

Assistance (ILSTA) for phase II (2019-2021) leverages on the activities of phase I by consolidating the awareness about AML/CFT risks faced by Lao PDR, improving capacities on AML /FT related prosecutions and deepening the knowledge in relation to the new Lao PDR Penal Code.

Luxembourg contribution: EUR 442,300

Contacts

Embassy of the Grand Duchy of Luxembourg in Vientiane, Laos

Patrick Hemmer

Ambassador with residence in Bangkok

Sam Schreiner

Chargé d'affaires a.i.

Nicolas Tasch

Attaché

Embassy of the Grand Duchy
of Luxembourg in Laos
Rue Dongpayna,
Ban Saphanthong Neua,
Sisattanak District
Vientiane Capital, LAO PDR

Email: vientiane.amb@mae.etat.lu

Tel: (856) 21 41 73 20

Fax: (856) 21 41 73 21

LuxDev Vientiane

Geert de Bruycker

*Regional Representative
for Laos and Vietnam*

Cynthia Rutare/Philip Pearce

Programme Officers

Regional office of Vientiane
Rue Dongpayna,
Ban Saphanthong Neua,
Sisattanak District
Vientiane Capital, LAO PDR

Email: office.vientiane@luxdev.lu

Tel: (856) 21 41 72 37

Fax: (856) 21 41 72 47

Directorate for Development Cooperation and Humanitarian Affairs, Ministry of Foreign and European Affairs

Anika Brück

Desk Officer Asia and Gender

6, rue de la Congrégation
L - 1352 Luxembourg
LUXEMBOURG

Email: anika.bruck@mae.etat.lu

Tel: (352) 247 82 474

Fax: (352) 46 38 42

LuxDev Headquarters

Vanessa Stoz

*Programmes Adviser - Asia,
Latin America and Kosovo*

LuxDev

10, rue de la Grève
BP 2273
L-1022 Luxembourg
LUXEMBOURG

Email: stoz@luxdev.lu

Tel: (352) 29 58 58 225

Fax: (352) 29 58 58 200







**Directorate for Development Cooperation
and Humanitarian Affairs**

6, rue de la Congrégation
L-1352 Luxembourg
T (+352) 246-82351

www.cooperation.gouvernement.lu

 facebook.com/MAEE.Luxembourg

 twitter.com/mfa_lu