

Lao People's Democratic Republic

LUXEMBOURG
AID & DEVELOPMENT



LAOS-LUXEMBOURG

09 • 2019

**DEVELOPMENT
COOPERATION**







Table of contents

04	LAOS OVERVIEW
06	STRATEGIES & PRINCIPLES
07	LUXEMBOURG DEVELOPMENT COOPERATION IN LAOS
08	INDICATIVE COOPERATION PROGRAMME
09	FIGURES
12	BILATERAL COOPERATION
20	MULTILATERAL COOPERATION
22	REGIONAL COOPERATION
26	COOPERATION WITH NGOs
26	HUMANITARIAN ASSISTANCE
27	OTHER CONTRIBUTIONS BY LUXEMBOURG GOVERNMENT
29	CONTACTS

Laos, overview*



139/188

Human Development Index

170/1,000

Mortality rate, adult, female
(per 1,000 female adults)

3.4%

Urban population growth

49/1,000

Infant mortality rate

67

Life Expectancy at birth

2.6

Children born/woman

80%

Literacy rate

23

2

Median Age

7,061,507

Population

GDP /capita (PPP)
7,090 USD

1.6%

Population growth rate

24.3/1,000

Birth rate

236,800 km²

Area

*Source: databank.banquemondiale.org

- Luxembourg Development Cooperation-main areas of operation
- Luxembourg Development Cooperation-secondary areas of operation
- Embassy of the Grand Duchy of Luxembourg and LuxDev Regional Office in Vientiane, Laos



Luxembourg Development Cooperation: Strategies & Principles



GOALS

Luxembourg Development Cooperation is strongly committed to eradicating poverty.



ACTIONS

While adopting a human-centered approach, actions are designed and carried out in the spirit of sustainable development, including its social, economic and environmental aspects. They aim at implementing the Sustainable Development Goals (SDG)

PRIORITY AREAS

Main intervention areas:

- improving access to quality basic social services;
- enhancing socio-economic integration of women and youth;
- promoting inclusive and sustainable growth;
- strengthening inclusive governance.

CROSS-CUTTING ISSUES

- gender equality;
- environment and climate change;
- human rights.

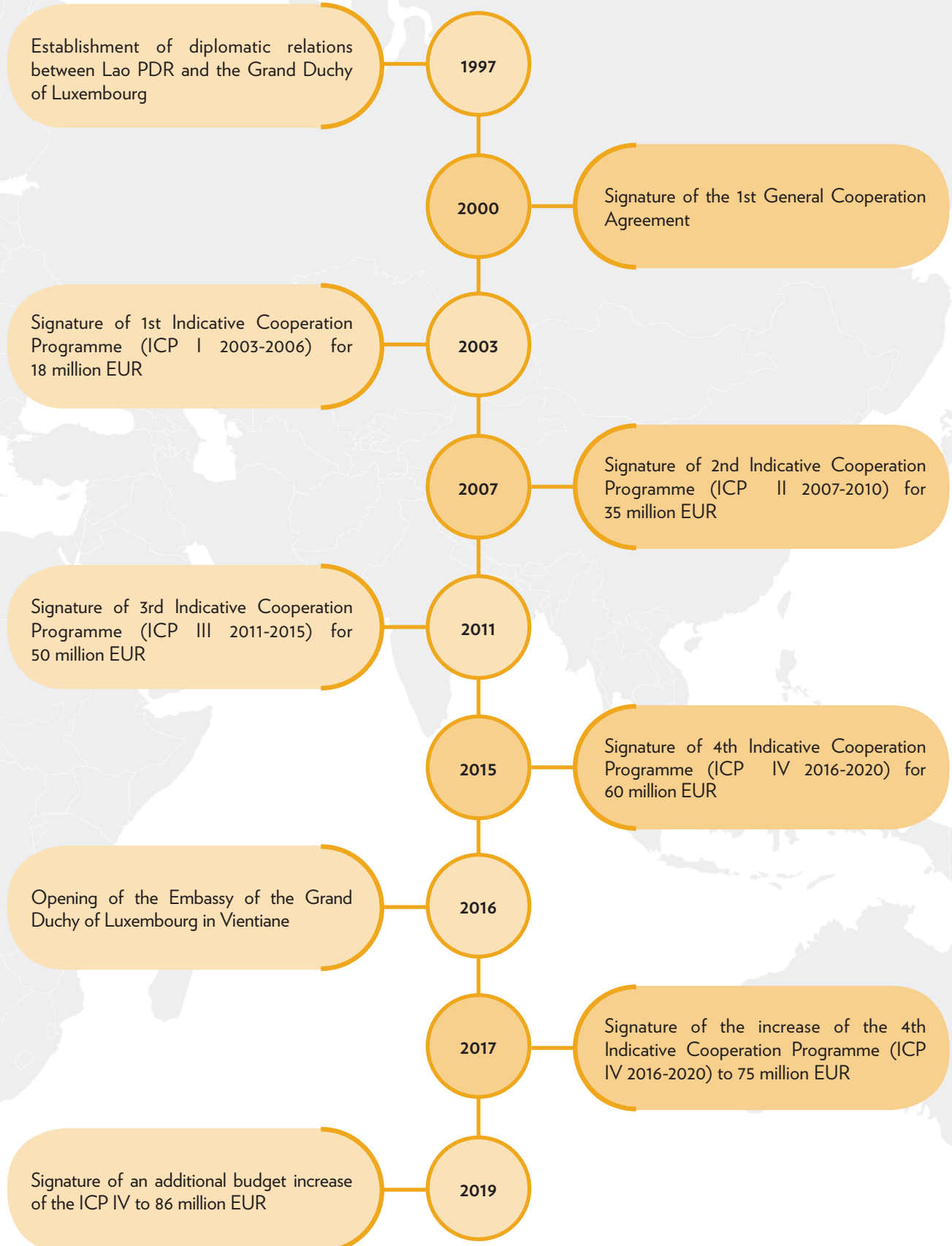
CONCENTRATION OF DEVELOPMENT AID IN VIEW OF MAXIMISING ITS IMPACT

- long-term commitment in a limited number of partner countries, particularly in Western Africa and the Sahel;
- sectoral concentration in areas in which Luxembourg holds expertise or a specific comparative advantage (e.g. international financial center, ICT, data management);
- partnership approach for the definition of Indicative Cooperation Programs (ICPs);
- alignment with the principles of development effectiveness.

OFFICIAL DEVELOPMENT ASSISTANCE (ODA)

- 1% share of gross national income allocated to ODA since 2009;
- 100 % untied ODA, entirely grants based;
- partnership approach for ODA implementation, relying on bi- and multilateral instruments and Non-governmental organisations (NGO), as well as programme support;
- includes the delivery of Humanitarian assistance: emergency aid in response to humanitarian/natural disasters and violent conflicts, post disaster aid, transition aid, prevention and resilience aid;

Luxembourg Development Cooperation in Laos



4th Indicative Cooperation Programme between Laos and Luxembourg (2016–2020)

ICP AGREEMENT

Signed in September 2015 between the Laos and Luxembourg governments, the fourth Indicative Cooperation Programme (ICP 4) is covering the time period 2016 – 2020.

ICP BUDGET

Based on an initial budget allocation in 2016 of 60 million EUR by the Luxembourg government, the ICP 4 has benefited from several budget increases over the years, which have raised the overall ICP 4 budget to more than 86 million EUR in 2019.

PRIORITY AREAS



Access and provision of basic health services => because a safe, affordable and accessible health care system for all is an essential cornerstone for sustainable socio-economic development.



Education, particularly vocational and technical training in the tourism and hospitality sector and access to labour markets => in order to equip young graduates with quality skills and competencies matching labour market needs.



Local/Rural development => to facilitate an enabling environment for improved socio-economic status and access to quality public service provision aligned with local needs and priorities.



Inclusive governance => to strengthen capacities for an enabling environment for effective rule of law and access to justice.

GEOGRAPHIC CONCENTRATION AND KEY ACTORS

4



Luxembourg's main geographical areas of operations are the 04 provinces of Bokeo, Bolikhamxay, Khammouane and Vientiane.

4



Key implementation actors of ICP 4 programmes and projects include LuxDev - Luxembourg Development Cooperation Agency, United Nations agencies, Non-governmental and civil-society organisations as well as actors from the academic and private sectors.

ICP 4 MID-TERM REVIEW

- highlighted the strong strategic relevance and alignment of ICP 4 with the priorities of Lao PDR's Development Strategy as well as with its sectoral policies;
- emphasized the relevance of the main sectoral/thematic focus areas of the ICP 4;
- noted that synergies between ICP 4 programmes could be further enhanced and that additional efforts are needed to ensure a sustainable development impact in the long term.

Figures

1. Bilateral Cooperation

Duration	Code	Title	Execution	Total Budget EUR
2014-2021	LAO/027	Lao-Luxembourg Health Sector Support Programme-Phase II	LuxDev	28,900,000
2014-2018	LAO/028	Strengthening the Capacity of the Ministry of Planning and Investment's Department of International Development	LuxDev	860,000
2016-2021	LAO/029	Skills for Tourism-Human Resources Development in the Tourism and Hospitality Sector	LuxDev	*7,500,000
2016-2022	LAO/030	Local Development Programme for Bokeo, Bolikhamxay, Khammouane and Vientiane Provinces	LuxDev	30,000,000
2017-2022	LAO/031	Support Programme for Legal Teaching and Training and to the Promotion of the Rule of Law Concept in Laos	LuxDev	5,000,000
2019-2023	LAO/033	Strengthening the Effectiveness of Official Development Assistance Management in Laos	LuxDev	1,300,000
2016-2020	-	PARECIDS II	MAEE	2,218,616
2017-2021	-	Inter-University cooperation between the University of Luxembourg and the National University in Laos - Faculty of Law	University of Luxembourg and the National University in Laos	696,400
2016-2020	-	Scholarships for students from Laos, Cabo Verde, Nicaragua and Vietnam	BBI	1,240,000
2017-2020	-	Capacity building for the Laos statistical bureau	STATEC	800,000
2018-2020	-	Support to Lao Microfinance Association and Training/coaching programme on agricultural finance in Laos	ADA	746,401
2019-2021	-	Training in the financial sector	ATTF	150,000

* Together with SDC - 15,000,000

2. Multilateral Cooperation

Duration	Title	Execution Agency	Total Budget EUR
2017-2020	Improving Reproductive, Maternal, Newborn and Child Health (RMNCH) in Lao PDR	UNICEF, WHO, UNFPA	6,500,000
2017-2020	Support Programme for NSEDP Implementation towards LDC Graduation, MIC Transition and SDG Achievement	UNDP	400,000
2017-2021	Moving towards achieving SDG 18 - Removing the UXO obstacle to development in Lao PDR	UNDP	600,000

3. Regional Cooperation

Duration	Title	Execution Agency	Total Budget EUR
2009-2022	Aid for trade	EIF	9,000,000
2016-2020	MRC - Mekong River Commission	MRC	1,000,000
2017-2021	Support to the extension of Social Health Protection in South-East Asia	ILO	2,602,000
2018-2022	Mekong Region Land Governance Project- Phase II -in cooperation with the Swiss Agency for Development and Cooperation (SDC)	SDC	1,350,000
2018-2021	Responsible Inclusive Finance Facility - South East Asia (RIFF-SEA)	Social Performance Task Force (SPTF)	787,120
2019-2021	Supporting policy dialogue on national health policies, strategies and plans in six countries within the framework of the EU-Luxembourg-WHO Universal Health Coverage Partnership (Phase III)	EU-LU-WHO	8,000,000

4. Cooperation with NGOs

Duration	Title	NGO	Total Budget EUR
2016-2020	Reduction of economic vulnerability through improved rural livelihood (Mok)	Caritas	1,662,477
2017-2019	Reduction of poverty and hunger, achievement of food security and improving the nutrition and health by targeting poor and vulnerable communities in remote areas	Care in Luxembourg	849,519
2016-2022	Improving the living conditions of persons with disabilities	Handicap International Luxembourg	696,001
2016-2021	Cardiology and cardiac surgery	Aide au développement de la Santé	1,397,536
2018-2020	Cathétérisme interventionnel cardiopathies pédiatriques	Aide au développement de la Santé	222,598
2018-2020	Détection et prise en charge des malformations cardiaques pédiatriques	Aide au développement de la Santé	789,926
2019-2021	Chirurgie cardiaque adulte - reconstruction de la valve mitrale et remplacement valvulaire	Aide au développement de la Santé	497,536

Figures (continued)

5. Humanitarian Assistance

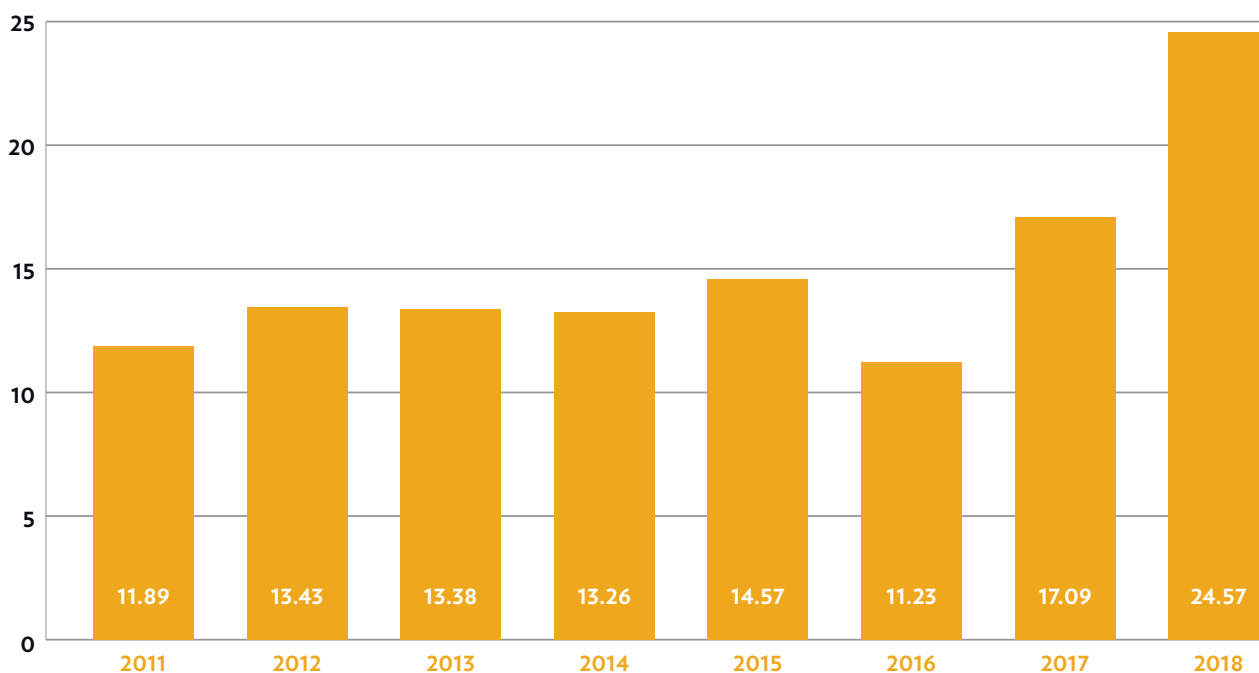
Duration	Title	NGO	Total Budget EUR
2018	Emergency Appeal dam collapse Attapeu	International Federation of the Red Cross Societies	250,000
2019	Risk-reduction project in the Mork district	Fondation Caritas Luxembourg	212,500

6. Funding from other Luxembourg Ministries

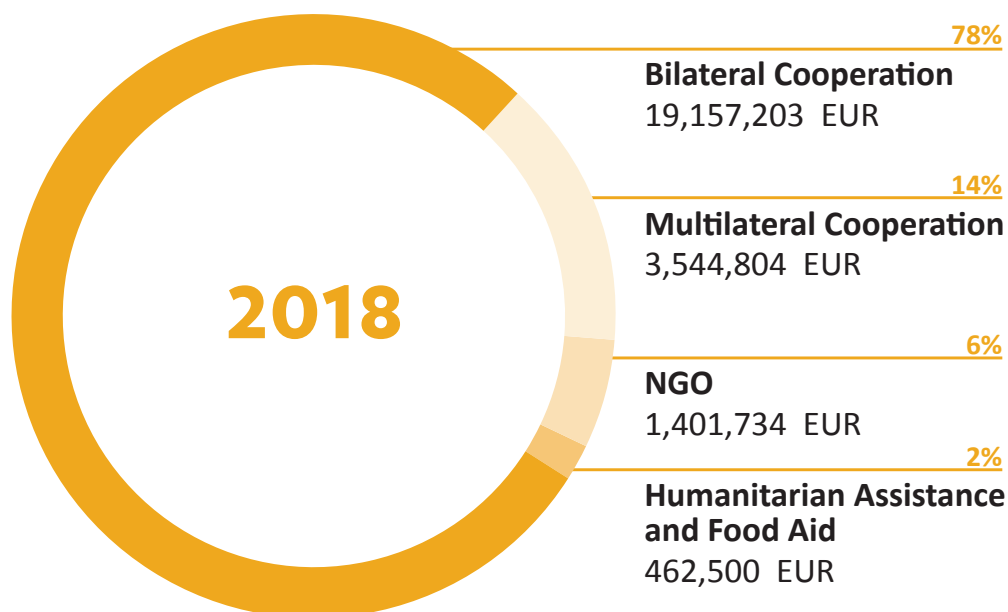
Duration	Title	Organisation	Total Budget EUR
Ministry of the Environment, Climate and Sustainable Development (MECDD) - International Climate Finance			
2017-2023	World Bank Energy Sector Management Assistance Program (ESMAP)	Climate and Energy fund	1,000,000
2017-2020	Care in Luxembourg- « Agro-Climate Information for the Adoption of Resilient Farming Practices by Women and Ethnic Minority Farmers »	Climate and Energy fund	356,900
2019-2023	Care in Luxembourg- « Agro-Climate Information for the Adoption of Resilient Farming Practices and improved risk management by women and ethnic minority farmers »	Climate and Energy fund	459,550
Ministry of Finance - Fonds de lutte contre certaines formes de criminalité			
2015-2020	UNODC : LAO/Z49 - Houaphanh Alternative Development Programme	Fonds de lutte	2,800,000 USD
2016-2019	ILSTA: Lao PDR - Capacity Development To Address Narcotics Trafficking	Fonds de lutte	280,000 EUR

Evolution of Funds disbursed

Millions EUR

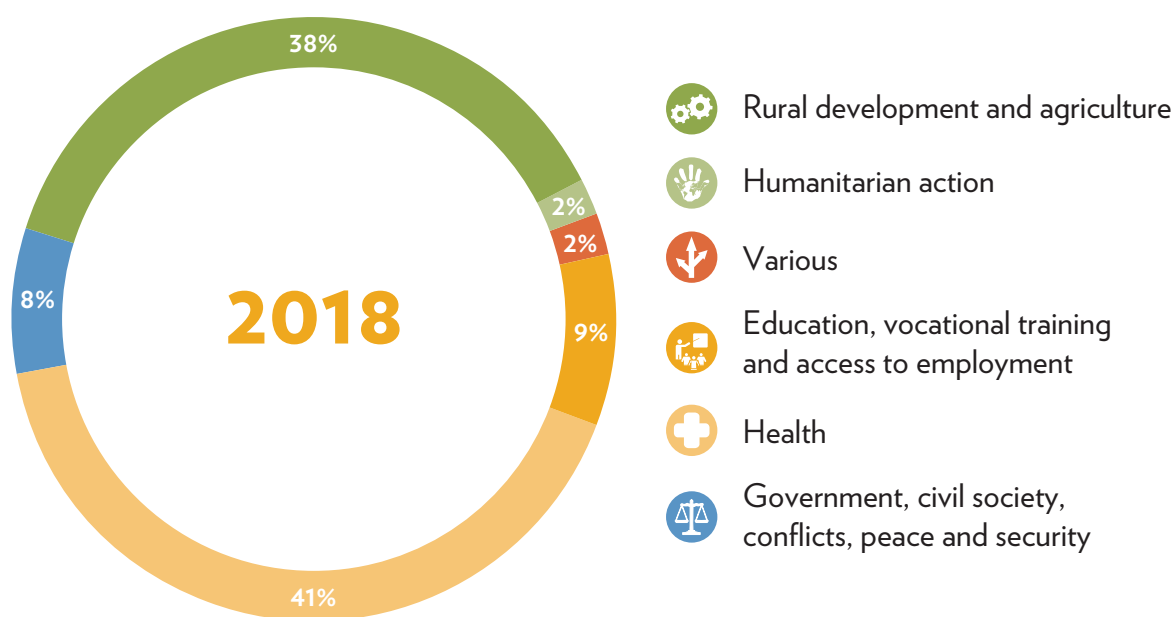


Distribution of Official Development Assistance (ODA)



ODA per sector Development Cooperation

Laos 2018: 24,57 million EUR



Lao-Luxembourg Health Sector Support Programme-Phase II



2014-2021

LAO/027

The Grand Duchy of Luxembourg has been providing support to the health sector since the Cooperation between Lao PDR and Luxembourg started in 1997.

The preceding phase's (LAO/017) specific objective was to “assist the Lao Ministry of Health (MOH) in implementing and operationalising its long-term Health Sector Strategy 2000-2020, Primary Health Care Strategy and Health Sector Development Plans, emphasising its eight Priority Programmes, with a view to implement quality health services for reaching a larger share of the population, especially the poorest, those at risk, and living in more remote areas. This includes ethnic minority peoples”.

The project will remain in that continuity, with a similar general objective, and a specific objective that aims to support the implementation of the updated sector policy (Health Sector Reform Framework 2013- 2025) with a specific focus on Mother and Child Health, by supporting district health systems and actors.

The Project is operational in the three provinces of Vientiane, Bolikhamxay and Khammouane. Efforts are being made to strengthen the Provincial Health Department roles and responsibilities, towards effective Primary Health Care service delivery at district level and Mother and Child Health activities.

The project specialises in the development of a patient centred health care approach, including specific focus on priority target groups such as pregnant women and children under five-years. The project is designed to support the MOH in implementing the Health Sector Reform framework 2013-2025, prioritising access to quality Mother and Child Health services through the strengthening of health districts in the three central provinces.

Key results by 2019:

- 2.14 million EUR Joint Participatory Mechanism (JPM) operational funds made available to the provincial treasuries. These funds are being used to finance the delivery of health care services; Government of Laos budget already made available 428,351 EUR;
- 285,000 inhabitants will be served by the newly opened provincial hospital in Bolikhamxay;
- 120 scholarships awarded for long and short-term studies in clinical and health-related subjects;
- 38 students graduated from clinical and health-related subjects; and
- project support District Health Management Information Systems are effectively used and produce timely reports in 28 districts and 178 health centres.

Luxembourg contribution: 28,900,000 EUR



◀ Vaccination at Pakkading health centre

Strengthening the Capacity of the Ministry of Planning and Investment's Department of International Development



2014-2018

LAO/028

The project is set in the framework of the capacity strengthening and governance priorities defined in the 2011-2015 Indicative Cooperation Programme (ICP) between Laos and Luxembourg. It is an answer to a special request submitted by the Lao government to its Luxembourg counterpart.

The project is dedicated to strengthen the capacity of institutions in charge of Official Development Assistance (ODA) management. Currently, a very small share of the work carried out by the Department for International Cooperation (DIC) at the Ministry of Planning and Investment (MPI) is based on established and well documented procedures, models and tools; either in the administrative field or in the technical domain of ODA management and coordination. Moreover, substantive work such as the preparation of Round Table Meetings and the production of reports is mostly carried out by or with the support of external consultants provided by donor projects. This leads to low levels of ownership and sustainability and limits the development of in-house expertise. It leaves the organisation with insufficient capacities to actually lead ODA management and coordination processes.

The project's overall objective is to contribute to the improvement of development co-operation effectiveness in Lao PDR. Its specific objective is

to strengthen the DIC's capacity to manage aid effectively, build partnerships and establish effective working practices with national and international stakeholders.

Key results:

- 199 middle managers/technical officers trained on leadership and management in various courses;
- six policy driven workshops held with the Ministry of Planning and Investment, other line ministries, development partners and private sector;
- seven Department of International Cooperation's (DIC) operation have been strengthened through the delivery of workflow procedures for seven divisions and overall procedure for DIC through Total Quality Management and counseling;
- Document Management System and iOffice operationalised and in use. As a result of this, standard operating procedures and processing paper work within DIC on ODA related matters reduced from 16 days to five days; and
- DIC's Quality Management System has been accredited with an international standard certificate, ISO 9001:2015.

Luxembourg contribution: 860,000 EUR

Skills for Tourism-Human Resources Development in the Tourism and Hospitality Sector



2016-2021

LAO/029

With one of the youngest populations in the Association of South East Asian Nation (ASEAN) region, Lao PDR is expected to benefit from a 'demographic dividend' to the economy in the medium-term, particularly if young women and men are equipped with the appropriate skills and knowledge for the work place. The economy of the country is changing, with a reduced reliance on agriculture and an increase in the industry and service (including tourism) sectors. Developing tourism and ensuring that Lao people are able to take full advantage of the employment opportunities the sector offers is a priority for the country, and is in line with the vision and objectives of the eighth National Socio-Economic Development Plan 2016-2020 and Lao PDR Tourism Strategy 2006-2020. Therefore, Luxembourg and Switzerland have joined hands with Lao PDR to implement the 'Skills for Tourism', which supports improvements in tourism/hospitality (T/H) vocational education and skills development. A particular focus of the project is to support people from disadvantaged backgrounds to acquire the skills needed for direct employment in the sector, or engage indirectly in the wider tourism economy.

The project will directly support as many as 5,000 beneficiaries in training and finding employment in the T/H sector, including a specific focus on young people between 15 and 35 (75% of target), women (60% of target) and disadvantaged people (50%).

The project operates at various governance levels. At the macro level, it supports policy dialogue, capacity development and coordination support to national institutions. At the meso level, the project is support-

ing alignment and enhancement of the quality and volume of skills development and vocational training. At micro level, affirmative action support is being provided to disadvantaged young people by improving awareness of tourism and hospitality education, training and employment opportunities, defining career paths and eliminating access barriers.

Key results by 2019:

- 73 senior personnel in key stakeholder organisations including Ministry of Education and Sports, Ministry of Labour and Social Welfare and Ministry of Information, Culture and Tourism engaged in capacity strengthening initiatives;
- 2,348 participants (76% women) have completed/are undertaking project-supported tourism/hospitality vocational education and skills development training programmes, of which:
- 80% were people from disadvantaged backgrounds
- 83% of new entrants who already completed training were employed full-time or enrolled in further studies three months after graduation. 88% of those employed are in the tourism/hospitality sector
- 970 staff (63% women) from 467 Lao tourism/hospitality micro small and medium enterprises were upskilled in a range of areas including Service Quality and Food Hygiene/Safety; and
- 427 tourism/hospitality teachers and trainers completed pre-service or in-service training (71% women).

Luxembourg contribution: 7,500,000 EUR

Local Development Programme for Bokeo, Bolikhamxay, Khammouane and Vientiane Provinces



2016-2022

LAO/030

The 'Local Development Programme for Bokeo, Bolikhamxay, Khammouane and Vientiane Province' supports rural poverty reduction in disadvantaged upland and highland areas of Lao PDR. Such areas are experiencing widening gaps with urban and lowland areas in terms of poverty and social services, and the environmental conditions are generally deteriorating, which exacerbates poverty and climate change vulnerability. The Project tackles these problems through a two-tiered approach, combining practical local development with governance strengthening.

The practical development work focuses on the 14 poorest districts in four target provinces, particularly 229 target villages with a population of 150,000, 74% of whom are ethnic minorities.

Since poverty reduction is the overall objective, as much as 60% of the 30 million EUR budget from the Government of Luxembourg is spent directly in the target villages. About half of this amount is used for community-led initiatives channelled through village development funds managed by each community. This supports, for instance, sanitation, upgrade of schools, land management, agricultural extension, training, credit schemes and special support to destitute households.

The other half of the practical development budget is allocated for infrastructure development, mostly education facilities and improved water supply systems. This helps overcome major problems with low sanitation, high stunting rates, and low educational outcomes. The construction programme is carried out by the relevant provincial or district departments according to government procurement and building standards, which at the same time enhances capacity and decentralization in these fields.

The governance strengthening accounts for 30% of the budget and focuses on improving the systems and capacity for more effective poverty reduction. This includes improved development planning, monitoring and evaluation at national and local level; development partner coordination; investment management; and information systems.

The project is executed jointly by the Ministry of Planning and Investment and by LuxDev. The Provincial Planning and Investment Departments and District Planning Offices are coordinating the field implementation. For technical support, relevant sector departments are engaged, particularly in agriculture, education, health and public works.

Key results:

- 2,000 community-led and linkage to the UN JP action plans including sanitation, upgrade of schools, land management, agricultural extension, training, credit schemes completed, of which 600 have been carried out through community empowerment and participation as well as bottom-up planning from village and district level;
- 150 rural infrastructure sub-projects completed, with another 30 sub-projects selected;
- 229 village development funds established; and
- 13 delegation agreements amounting to 13.6 million EUR being managed by national implementing agencies at central, province, district and village level, with technical and administrative assistance provided by a LuxDev team of national, regional and international advisers.

Luxembourg contribution: 30,000,000 EUR

Support Programme for Legal Teaching and Training and to the Promotion of the Rule of Law Concept in Laos



2017-2022

LAO/031

In 2009, the Lao People's Democratic Republic (PDR) adopted a Legal Sector Master Plan (LSMP) that establishes the framework to develop effective institutions in the entire legal sector as the foundation for the Rule of Law.

Furthermore, the Lao PDR's 8th National Socio-Economic Development Plan (NSED) 2016-2020 aims to facilitate the graduation from Least Developed Country status by 2020 and to consolidate regional and international integration in the context of the Association of Southeast Asian Nations (ASEAN) Economic Community. Among the cross-cutting issues addressed by the NSED is the enhancement of the effectiveness of the public governance and administration. These goals highlight the need to develop a law system that is complete, harmonised, clear, reliable and accessible to everybody.

Positive trends have been triggered through the previous Luxembourg-funded project LAO/023 in order to strengthen the higher education in the legal sector. However, complying with ASEAN standards and updating the curricula towards the evolution of the legal framework requires a constant effort for improving further the efficiency of the faculties.

Access to justice also needs to be further strengthened. As stated in the LSMP, there are "insufficient conditions to allow people access to justice by themselves or through lawyers or other guardians in all levels of the court proceedings and in all cases to secure the rights in obtaining legal assistance, especially for the poor and people having less opportunity".

Based on these challenges, the project LAO/031 has two specific objectives:

- the reinforcement of the enabling environment for access to justice, which should lead to strengthened access to justice;
- the continuation of the strengthening of legal education and training, which should lead to improved legal higher education and strengthened institutional capacity.

The project in cooperation with the Institute for Legal Support and Technical Assistance (ILSTA), works with the main beneficiaries of the project who are legal practitioners and civil servants active in the legal sector, civil servants of the Ministry of Justice, and academic staff, notably of the Faculty of Law and Political Science (FLP) of Vientiane Capital and the Faculty of Law and Administration of Champasak.

Key results by July 2019:

- 2,342 civil servants and legal practitioners from the Ministry of Justice, Lao Bar Association, People's Supreme Court, Office of the Supreme People's Prosecutor, and State Inspection Authority engaged in capacity building;
- two Provincial Legal Aid Offices established and various capacity building workshops held on procedures and organisational management conducted on that legal aid offices;
- 1,762 beneficiaries of legal training workshops;
- 1,594 beneficiaries on open lectures of various law subjects;
- 697 teachers trained on law teaching and student assessment skills;
- five academic programmes revised and adopted by the Faculty of Law and Political Science, paving the way for new curricula;
- two strategic plans adopted by the FLP and the Faculty of Law; and
- 559 students benefited from the English for Law programme.

Luxembourg contribution: 5,000,000 EUR



Strengthening the Effectiveness of Official Development Assistance Management in Laos

2019-2023

LAO/033

Lao PDR aims to graduate from Least Developed Country (LDC) status. At the same time, progress will be made towards meeting the Sustainable Development Goals (SDGs). Implementation of the SDGs is embedded in the country's National Socio-Economic Development Plan (NSED) which reflects the three dimensions of sustainable development: economic, social and environmental. A recent mid-term review of the NSED shows that the graduation process will have a slowing effect on the level of ODA financing in the country. Furthermore, traditional ODA will decline even without LDC graduation as the country's income continues to grow. Therefore, there will be increasing pressure to adapt to this new reality and use ODA resources effectively.

LAO/033 is a capacity strengthening project that aims to address ODA management needs of the Ministry of Planning and Investment's Department of International Cooperation (DIC) and six provin-

cial Sections for International Cooperation (SICs). The project will also provide capacity strengthening for the Department of Inspection (DOI) at MPI, particularly in relation to anti-corruption measures as well as the SDG Secretariat housed in the Ministry of Foreign Affairs.

The project's overall objective is that ODA effectively supports implementation of NSED whilst the specific objective is that key Lao agencies can effectively manage and coordinate ODA.

The project focuses on two results:

- DIC has the capacity to effectively manage and coordinate ODA through provincial SICs and line ministries and report timely on ODA; and
- the cross-cutting issues reflected in SDGs are appropriately taken into account in ODA interventions and support NSED.

Luxembourg contribution: 1,300,000 EUR

PARECIDS II-Luxembourg-Laos Partnership for Research and Capacity Building in Infectious Disease Surveillance



2016-2020

In the framework of the PARECIDS programme, a laboratory specialised in infectious diseases has been set up at the Pasteur Institute in Vientiane. The programme is implemented by the Institute of Health of Luxembourg. Support is also provided to a team of Lao researchers to allow them to further develop their knowledge and to facilitate their integration in the international scientific community.

Part of the Lao-Luxembourg Lab's research is focusing on infectious diseases and as such plays an important role in the identification of different stereotypes of the virus.

PARECIDS II succeeds a first research programme (2010-2015) within the framework of ICP III.

Luxembourg contribution: 2,218,616 EUR

Inter-University Cooperation between the University of Luxembourg and the National University of Laos - Faculty of Law



2017-2021

The project supports the cooperation and academic exchange between the University of Luxembourg and the National University in Laos within the Faculty of Law in the field of law, training of trainers, as well as documentation and research. Further, the project also contributes to the strengthening of good governance in the country. This cooperation aims to strengthen the legal higher education for students as well as for law practitioners in the

field. Over the years, several short-term exchanges between the universities are rolled out for lecturers, students, researchers and administrative staff. These include the teaching of lectures, summer/winter schools for lecturers and PhD students, research support visits in Luxembourg and Laos for students, capacity building for staff as well as staff mobility allowing for mutual exchanges between teachers.

Luxembourg contribution: 696,400 EUR

Scholarships for students from Laos, Cabo Verde, Nicaragua and Vietnam



2016-2020

Besides its bilateral vocational training projects in the area of tourism and hospitality, Luxembourg provides scholarships to students and teachers for Bachelor/Master degrees at the Brussels Business Institute (BBI), a School for Hospitality and Tourism Business in Wiltz every year. The beneficiaries are selected from the target countries of Laos, Cabo Verde, Nicaragua and Vietnam, where Luxembourg is financing vocational training projects in the concerned fields.

Year by year fourteen students receive scholarships to participate in the training at BBI. In addition, the project ensures exchanges between directors of the different schools and between professors of the different target countries and Luxembourg. Currently, the project has been granted a one-year extension to allow the three remaining students from the different partnering schools to graduate.

Luxembourg contribution: 1,240,000 EUR

Cooperation between National Institute of Statistics and Economic Studies of Luxembourg (STATEC) and Lao Statistic Bureau (LSB)



2017-2020

The project puts into place a cooperation between the two national statistics offices LSB and STATEC. The cooperation is based on supporting the development of the statistical activities lead by LSB. The project will work on developing the domain of envi-

ronmental statistics, supporting the household survey and exchange on the good practices of management of a national statistical system.

Luxembourg contribution: 800,000 EUR

ADA - Support to Lao Microfinance Association and Training/ coaching programme on agricultural finance and transformation of village banks into MFIs in Laos



2018-2020

ADA, a Luxembourg NGO specialised in inclusive finance, has worked in partnership with the Lao Microfinance Association (MFA) since 2010. The main objectives of the partnership are to professionalise the association and improve both the services to its members and sector-wide communication and transparency. ADA has extended its support to the financial inclusion sector in Laos for the period 2018-2020, with the MFA as the key partner on the ground, the goal being to promote financial inclusion for the people of Laos, especially low income populations.

Considering that formal financial institutions only offer limited services to agricultural households,

even though the potential of the agricultural financial market is recognised, ADA, together with FAO, have developed a technical support offer. Training is provided to more than 20 Microfinance institutions (MFIs). The aim is to ensure that farmers and other agricultural value chain actors have access to financial services adapted to their needs, enabling them to improve their living conditions.

Furthermore, starting from 2019, ADA will support LuxDevelopment in formalizing village banks established through rural development interventions, and to transform them in viable Microfinance Institutions.

Luxembourg contribution: 746,401 EUR

ATTF - Training in the financial sector



2019-2021

In order to mobilize the expertise and potential of the Luxembourg financial center to support international development, the Financial Technology Transfer Agency (ATTF / House of Training) will start implementing a training programme in Lao PDR in 2019.

This exchange contributes, beyond the transfer of knowledge in the banking sector, to the establishment of lasting international links between professionals of the financial sector.

Luxembourg contribution: 150,000 EUR

UNICEF/WHO/UNFPA - Improving Reproductive, Maternal, Newborn and Child Health in Lao PDR



2017-2020

The United Nations Joint Programme (UNJP) for Reproductive Maternal Newborn and Child Health (RMNCH) will support implementation of the Government's new National Strategy and Action Plan for Integrated Services for RMNCH 2016-2025, and contributes to improving the health status of women, newborns, children and young people in Lao PDR. It supports RMNCH policy advice and knowledge transfer at the national level, and sub-national support will be used to put policies, guidelines, tools and approaches into practice and to generate results and lessons that can be used to inform national scale-up.

The UNJP will primarily work at the national level. At the same time, it will establish strong linkages between national and sub-national levels to ensure implementation of policies and strategies as well as uptake of results that can be reflected in the standardization of guidelines, approaches, curriculum, and tools and to inform national scale-up. While the UNJP aims to strengthen the health system to benefit the nation, programme support will focus geographically in three provinces (Bokéo, Savannakhet and Bolikhamxay) to generate lessons learned for policy development, and better translate strategy into implementation.

This joint programme implemented by three different UN agencies (UNICEF, WHO, UNFPA) is formulated around three main objectives:

- support to the Ministry of Health at the national as well as subnational level to improve its leadership, planning and management in the implementation of maternal, neonatal and child health (MNCH) services;
- improvement of quality of MNCH services including nutritional education to address chronic malnutrition;
- support to the Ministry of Health to improve community mobilisation and empowerment for MNCH services in selected zones and to increase demand as well as utilisation rates of these services.

Under ICP IV, Luxembourg continues its support to this programme.

Luxembourg contribution: 6,500,000 EUR

Moving towards achieving SDG 18 – Removing the UXO obstacle to development in Lao PDR Phase VI



2017-2021

Luxembourg has been financially supporting UXO clearance since 1999 with a total contribution of 2.732 million USD. The current phase continues previous clearance activities focusing on the nine provinces bordering Vietnam.

The UXO clearance programme has been identified by the Lao government in the 7th National Socio-economic Development Plan as a main building block in supporting development, especially in rural areas. In recognition of the constraints posed

by UXO clearance to national development, the Lao government defined the reduction of UXO contamination as an additional, ninth MDG.

Luxembourg's contribution is used to support clearance operations, training and equipment of clearance teams, as well as communication campaigns on threats posed by UXO and the principles of the Oslo Convention on cluster munitions.

Luxembourg contribution: 600,000 EUR

UNDP–Support Programme for NSEDP Implementation towards LDC Graduation, MIC Transition and SDG Achievement



2017-2020

Since 2007, Luxembourg has been supporting UNDP in the implementation of the annual Round Table Meeting which gathers all development actors in Lao PDR with the aim of improving donor coordination and aid effectiveness in line with the principles of the Paris declaration and its local version, the Vientiane declaration on aid effectiveness. More specifically, the project aims to strengthen capacity of the Lao government to manage donor

coordination and discussions at sectorial as well as at national level. It is focusing in particular on the Department for International Cooperation of the Ministry of Planning and Investment (MPI), which is in charge of coordinating Sector Working Groups and the Roundtable process and , which culminates yearly in the Roundtable Meeting.

Luxembourg contribution: 400,000 EUR

Supporting policy dialogue on national health policies, strategies and plans in six countries within the framework of the EU-Luxembourg-WHO Universal Health Coverage Partnership Phase III



2019-2021

Besides the multi-bi projects funded within the framework of the ICP, Luxembourg Development Cooperation supports a global programme through the WHO with the EU, Ireland, UK, France and Japan, which covers its five African partner countries, Burkina Faso, Cabo Verde, Mali, Niger and Senegal, as well as Lao PDR (since 2015). The partnership aims to strengthen the capacity of countries to develop and implement strong, sustainable and comprehensive health policies, strategies and plans towards the achievement of Universal Health Coverage. It is adapted to the contexts of each country and, through its multistakeholder partnership nature, supports the exchange of lessons learned and good practices and promotes South-South cooperation. The main partners for implementation on the ground are the ministries of Health, along with other national and international partners.

The coordination of the Luxembourg funded part of the partnership is covered by three senior experts, one in the WHO Inter-Country Support Team in Ouagadougou covering Burkina Faso and Niger, one in the WHO country office in Bamako covering Mali, Senegal and Cabo Verde and one in the WHO country office in Vientiane covering Lao PDR.

The two key priorities of the UHC-P in Lao are human resources for health and health financing. These are placed within the overarching goal that Lao has set itself, namely to achieve universal health coverage for its entire population by 2025. The activities of the UHC-P are complementary to the bilateral health programme LAO/027 and fit perfectly within the larger health sector reform that Lao is undertaking.

The UHC-P, amongst others, aims to strengthen capacities on health financing at provincial and district levels, as well as to review the guidelines for the existing social protection programmes. These are, the Health Equity Fund, the Community-based health insurance (CBHI) and the Free MNCH Initiative. With regards to human resources for health, a review of the Strategy for the development of health personnel 2010-2020 is being undertaken together with the development of a Plan of Action 2016-2020.

Luxembourg Contribution to the overall programme covering the six countries: 8,000,000 EUR

ILO - Support to the extension of Social Health Protection in South-East Asia



2017-2021

Today nearly 73% of the world's population lacks access to adequate social protection coverage. The importance and potential of social protection in reducing poverty and inequalities and contributing to a more inclusive and sustainable economic development is recognised in the Sustainable Development Agenda. Luxembourg is a longstanding development partner to the International Labour Organisation (ILO) and founder of its flagship programme on social protection and is collaborating with the ILO's flagship programme in several key countries focused on the installation of social health protection schemes.

The project "Supporting the establishment of the National Health Insurance scheme and the extension of coverage in Lao PDR" funded by Luxembourg was implemented jointly by the ILO and the

World Health Organisation (WHO) from 2012 to 2016 and provided crucial support to ongoing reforms on social health protection in Lao PDR.

In 2017, the Luxembourg development cooperation signed a new Partnership Agreement with the ILO for the achievement of social protection targets under the SDGs. The subsequent phase of the project, with a budget of 2,602,000 EUR aims to extend social security and implement social protection to an entire region, including South-East Asia, starting with Laos, Myanmar and Vietnam. This innovative project aims at establishing a regional service operating as a cornerstone for the extension of the benefits of the project throughout the whole region.

Luxembourg contribution to the overall programme:
2,602,000 EUR

Aid for Trade – Enhanced Integrated framework



2009-2022

Luxembourg is engaged in the area of Aid for Trade, aimed at creating a context conducive to economic development. The Enhanced Integrated Framework (EIF) is the only multilateral partnership dedicated to assisting Least Developed Countries (LDCs) use trade as an engine for growth, sustainable development and poverty reduction. It helps LDCs, including Lao PDR, to play a more active role in the multilateral trading system. With EIF support, Lao PDR developed a Trade and Private Sec-

tor Development Roadmap that has served as the main instrument for the country's Aid for Trade harmonization, resource mobilization and coordination efforts. Analytical work has been used to enhance Lao PDR's export diversification and to promote sectors with high added value and social impacts, like maize, tea or handicraft, in order to ensure that trade improves the livelihoods of the poor.

Luxembourg contribution to the overall programme:
9,000,000 EUR

Responsible Inclusive Finance Facility - South East Asia (RIFF-SEA)



2018-2021

The Social Performance Task Force (SPTF) launched a facility for responsible inclusive finance in South East Asia, which allows the roll-out of its universal standards for social performance management (USSPM) among financial service providers in

the region. The Responsible Inclusive Finance Facility (RIFF-SEA) offers trainings and co-financing, and develops new resources for service providers in Lao PDR.

Luxembourg contribution: 787,120 EUR

Mekong Region Land Governance Project – Phase 2 – in cooperation with Switzerland



2018-2022

Since April 2014, the Mekong Region Land Governance Project (MRLG) aims to improve land tenure security of smallholder farmers in the Mekong Region through contributing to the design and implementation of appropriate land policies and practices. It responds to national priorities in terms of reducing poverty, increasing economic development and supporting smallholder farmers, so that they can be secure and make good decisions on land use and land management.

A first phase of four years has allowed MRLG to build partnerships and support a number of initiatives aiming at improving land tenure security for smallholder farmers across Cambodia, Laos, Myanmar and Vietnam (CLMV). MRLG Phase 1 implemented diverse and innovative activities across a large spectrum of land governance and land

tenure-related issues, worked with a broad range of partners, (including CSOs, academia, research institutes, government departments, agencies, and the private sector), and deployed multiple instruments in its operations. This included small and larger grants, workshops, training events, technical assistance, knowledge products, conferences, networking, alliance-building, etc.

Built on Phase 1 successes, the project Phase 2 remains focused on addressing land governance issues in the CLMV region, but with a shift towards supporting the strategic engagement of reform actors in the policy making processes at national, sub-national and regional levels.

Luxembourg contribution: 1,350,000 EUR



MRC–Mekong River Commission

2016-2020

Luxembourg is contributing with other donors to the MRC Basket Fund, which is a joint financial mechanism whereby member countries and development partners contribute funds to a common pooled account that is used to fund specific clusters of activities (MRC core functions).

The MRC core functions supported by the basket fund include:

- corporate services functions: provide for the management and administration of the Secretariat, support to the MRC governance and dialogues

processes among Member Countries and with MRC's partners, and support to non-technical processes under the 1995 Mekong Agreement as well as communication with MRC's stakeholders and general public

- core river basin management functions (CRB-MFs): include data acquisition, exchange and monitoring, analysis, modelling and assessment, planning support, forecasting, warning and emergency response and implementing MRC Procedures.

Luxembourg contribution: 1,000,000 EUR

NGO Projects

Three Luxembourg NGOs are currently implementing activities under a framework agreement with the Directorate for Development Cooperation; namely, Fondation Caritas Luxembourg, Handicap International Luxembourg and Care in Luxembourg. They support interventions in the field of rural development, vocational training, in health service delivery and improving the living conditions of persons with disabilities.

With a co-financing rate of 80% the contribution from Luxembourg Development Cooperation amounts to 2,791,600 EUR.

Every year, the embassy of Luxembourg in Vientiane supports a number of micro-projects contributing up to 15,000 EUR for a maximum period of one year.

The NGO Aide au développement de la santé receives funds to implement specific projects in the field of cardiology and cardiac surgery.

With a co-financing rate of 80% the contribution from Luxembourg Development Cooperation amounts to 2,709,760 EUR.

These micro-projects are implemented by local civil society organisations.

Luxembourg contribution: 50,000 EUR per year

HUMANITARIAN ASSISTANCE

Emergency Appeal dam collapse Attapeu



2018

In response to an emergency appeal regarding a dam collapse in Attapeu Province in 2018, Luxembourg made a financial contribution via the Interna-

tional Federation of the Red Cross Societies in the amount of 250,000 EUR.

Risk reduction project in the Mork district



2019

Moreover, in 2019, the Ministry co-financed a risk-reduction project of Fondation Caritas Luxembourg (212,500 EUR), which focuses on improving access

to water and strengthening the resilience of the local population in the district of Phoukout

World Bank Energy Sector Management Assistance Program (ESMAP)

2017-2023

In 2017, Luxembourg provided a financial contribution to the World Bank Energy Sector Management Assistance Program (ESMAP) for the preparation of a project, the LAO PDR Clean Cook Stove Initiative. The project is considering the distribution of 50,000 clean cook stoves across eight to eleven districts in three provinces (Vientiane Capital,

Savannakhet and Champasack) in Laos, to enhance energy efficiency in cookstoves and aims at quantifying benefits in terms of reducing CO₂ emissions and gender equality.

Luxembourg contribution through the Climate and Energy Fund: 1,000,000 EUR

Care in Luxembourg- « Agro-Climate Information for the Adoption of Resilient Farming Practices by Women and Ethnic Minority Farmers »

2017-2020

The project aims to reduce pressure on natural resources and train local minority farmers and women, to adapt to climate change in the districts of Mai and Samphanh. The project targets some 3,800 vulnerable beneficiaries, respectively 653 households. These small farmers are particularly vulnerable to extreme weather events, which affect agricultural production and therefore the

main source of income and food for these people. The proposed activities of the project are aiming to improve the accessibility of beneficiaries to agro-climatic information and to facilitate the dissemination of agricultural practices adapted to climate change.

Luxembourg contribution through the Climate and Energy Fund: 356,900 EUR

Care in Luxembourg- « Agro-Climate Information for the Adoption of Resilient Farming Practices and improved risk management by women and ethnic minority farmers »

2019-2023

This project will be implemented in Sekong province, in the districts of Dak Cheung and Kaleum, and concerns 10 villages. This province in Southern Laos has the highest poverty rate in the country and the population is very vulnerable to climate change. Especially women, who are among the hardest hit, struggle to recover from the consequences of extreme weather events and have no alternative sources of income. To address this situation, the objective of the project is to improve beneficiaries' access to climate information (climate information

services and early warning information systems for disaster risk reduction) and agricultural planning. Beneficiaries will be trained in innovative and intelligent farming practices. The proposed activities, which are aligned with relevant national strategies, will target a total number of 5,000 beneficiaries, with a main focus on women and farmers from ethnic minorities.

Luxembourg contribution through the Climate and Energy Fund: 459,550 EUR

UNODC : LAO/Z49 - Houaphanh Alternative Development Programme

2015-2020

The programme aims to reduce and eliminate opium poppy cultivation in Houaphanh province of Lao PDR by enabling opium dependent impoverished communities in target villages to gain sustainable licit income alternatives.

The focus is on developing and implementing sustainable alternative development interventions, includ-

ing the introduction of appropriate technologies to increase yield and productivity of food and permanent cash crops, diversification of income through on-farm and off-farm licit income-generating activities, provision of detoxification and treatment services to people affected by opium dependence.

Luxembourg contribution: 2,800,000 USD

ILSTA: Lao PDR - Capacity Development To Address Narcotics Trafficking

2016-2019

The contribution to ILSTA (Institute for Legal Support and Technical Assistance) seeks to assist the Lao authorities in addressing the rising narcotics production and trafficking in the country.

The project aims to strengthen the capacity in Lao PDR of criminal justice institutions, including the

judiciary, help government law enforcement bodies to prevent, investigate and prosecute cases of organized crimes and money laundering, as well as enhance international co-operation.

Luxembourg contribution: 280,000 EUR

Contacts

Embassy of the Grand Duchy of Luxembourg in Vientiane, Laos

Jean-Paul Senninger

Ambassador with residence in Bangkok

Sam Schreiner

Chargé d'affaires a.i.

Nicolas Tasch

Attaché

Embassy of the Grand Duchy
of Luxembourg in Laos
Rue Dongpayna,
Ban Saphanthong Neua,
Sisattanak District
Vientiane Capital, LAO PDR

Email: vientiane.amb@mae.etat.lu

Tel: (856) 21 41 73 20

Fax: (856) 21 41 73 21

LuxDev Vientiane

Quentin Bourdeaux

*Regional Representative for Laos,
Vietnam and Myanmar*

Benjamin Mackay

Programme Officer

Regional office of Vientiane
Rue Dongpayna,
Ban Saphanthong Neua,
Sisattanak District
Vientiane Capital, LAO PDR

Email: office.vientiane@luxdev.lu

Tel: (856) 21 41 72 37

Fax: (856) 21 41 72 47

Directorate for Development Cooperation and Humanitarian Affairs, Ministry of Foreign and European Affairs

Anika Brück

Desk Officer Asia and Gender

6, rue de la Congrégation
L - 1352 Luxembourg
LUXEMBOURG

Email: anika.bruck@mae.etat.lu

Tel: (352) 247 82 474

Fax: (352) 46 38 42

LuxDev Headquarters

Alice Risch

*Programmes Adviser - Asia,
Latin America & Kosovo*

LuxDev

10, rue de la Grève
BP 2273
L - 1022 Luxembourg
LUXEMBOURG

Email: risch@luxdev.lu

Tel: (352) 29 58 58 233

Fax: (352) 29 58 58 200







**Directorate for Development Cooperation
and Humanitarian Affairs**

6, rue de la Congrégation
L-1352 Luxembourg
T (+352) 246-82351

www.cooperation.gouvernement.lu

 facebook.com/MAEE.Luxembourg

 twitter.com/mfa_lu